

— THE — WHITECHAPEL REFECTORY

CHRISTMAS 2017



CANAPES

SAVOURY

- Game Rillettes
- Venison tartare, truffle
- Pheasant sausage roll
- Rare roast beef, horseradish
- Foie gras, brioche & apple
- Smoked salmon & dill crème fraîche
- Yellow fin tuna, soy, sesame & ginger
- Salt cod croquettes
- Pickled mussel, potato crisp & aioli
- Panella, burrata & wild mushroom
- Chestnut & sage soup
- Pumpkin & taleggio arancini

SWEET

- Mincemeat tart
- Chocolate & chestnut torte, salted caramel cream
- Clementine curd & meringue
- Colston Bassett Stilton & mulled wine poached quince



BOWL FOOD

SAVOURY

- Radicchio & red wine risotto, pecorino
- Gnudi, wild mushrooms & rocket
- Brown shrimp, capers, cabbage & chervil
- Octopus, smoked paprika & dill
- Cod, chorizo & chickpea
- Lamb stew, black olive & rosemary
- Cotechino, lentil & mustard fruits
- Smoked duck, green beans, shallot & cranberry



SWEET

- Chocolate brownie, pomegranate & amaretti
- Christmas crumble, custard
- Quince tart, calvados crème fraîche
- Saffron poached pear, cinnamon & raisins



UNLIMITED DRINK & CANAPE PACKAGE

- Choose 5 different canapes
- Glass of Prosecco per guest on arrival
- Unlimited Wines, Beers & Soft Drinks
- Venue Hire (7-11pm), lighting, PA & DJ
- Catering equipment, linen & transport
- Event catering management & staffing

PRICES:

- Gallery 1 (up to 250 people) – Price from £85 per guest
- Gallery 8 (up to 200 people) – Price from £90 per guest
- Creative Studio (20-60 people) – Price from £100 per guest

(All prices excl VAT)



UNLIMITED DRINK, CANAPE & BOWL FOOD PACKAGE

- Choose 3 canapes & 2 bowls
- Glass of Prosecco per guest on arrival
- Unlimited Wines, Beers & Soft Drinks
- Venue Hire (7-11pm), lighting, PA & DJ
- Catering equipment, linen & transport
- Event catering management & staffing



PRICES:

- Gallery 1 (up to 250 people) – Prices from £110 per guest
- Gallery 8 (up to 200 people) – Prices from £120 per guest
- Creative Studio (20-60 people) – Prices from £130 per guest

(All prices excl VAT)



FEASTING MENU

SELECTION OF SEASONAL STARTERS TO SHARE

- Charcuterie
- Butternut squash, burrata, sage & radicchio
- Smoked fish terrine
- Crumbed lamb, salsa verde

MAINS

(choose one for the party)

- Whole sea bass, Jerusalem artichoke, sea vegetables & lemon butter
- Short rib of beef, root vegetable gratin, broccoli & horseradish
- Pheasant, Brussels sprouts, chestnuts, pancetta, garlic & tarragon bread pudding

DESSERTS

(choose one for the party)

- Chocolate & grillotine cherry roulade
- Pear & almond tart, calvados crème fraîche
- Christmas rice pudding, poached winter fruits & pistachios

Cheeseboard - £10 supplement per guest

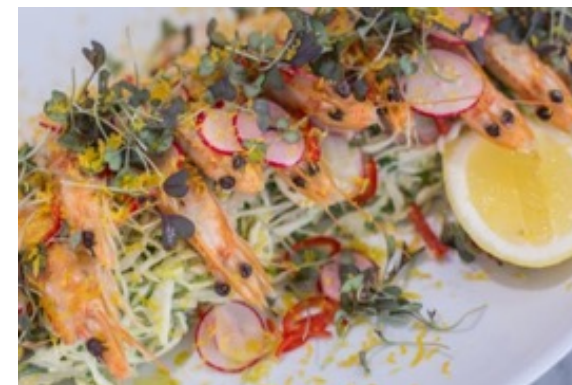
FEASTING MENU & UNLIMITED DRINK PACKAGE

- Glass of Prosecco per guest on arrival
- Choose 3 canapes
- 3 Course Feasting Menu
- Unlimited Wines, Beers & Soft Drinks
- Venue Hire (7-11pm), lighting, PA & DJ
- Catering equipment, linen & transport
- Event catering management & staffing

PRICES:

- Gallery 1 (up to 130 people) – Prices from £140 per guest
- Gallery 8 (up to 60 people) – Prices from £150 per guest
- Creative Studio (20-60 people) – Prices from £160 per guest

(All prices excl VAT)



PACKAGES

UNLIMITED DRINKS & CANAPES

- **Gallery 1** (up to 250 people)
from £85 per guest
- **Gallery 8** (up to 200 people)
from £90 per guest
- **Creative Studio** (20-60 people)
from £100 per guest
(all prices ex VAT)

UNLIMITED DRINKS, CANAPES & BOWL FOOD

- **Gallery 1** (up to 250 people)
from £110 per guest
- **Gallery 8** (up to 200 people)
from £120 per guest
- **Creative Studio** (20-60 people)
from £130 per guest
(all prices ex VAT)

FEASTING MENU & UNLIMITED DRINKS

- **Gallery 1** (up to 130 people)
from £140 per guest
- **Gallery 8** (up to 60 people)
from £150 per guest
- **Creative Studio** (20-60 people)
from £160 per guest
(all prices ex VAT)

CONTACT DETAILS:

The Whitechapel Refectory
Whitechapel Gallery
77-82 Whitechapel High Street
London
E1 7QX

We are more than happy to provide bespoke packages to suit your needs.
Please contact Luke or Vincent on 020 7522 7896 or at refectory@whitechapelgallery.org to discuss further.