

Whitechapel
Gallery

Benedict Drew
The Trickle–Down Syndrome

7 June – 10 September 2017

Large Print Guide

Gallery 1

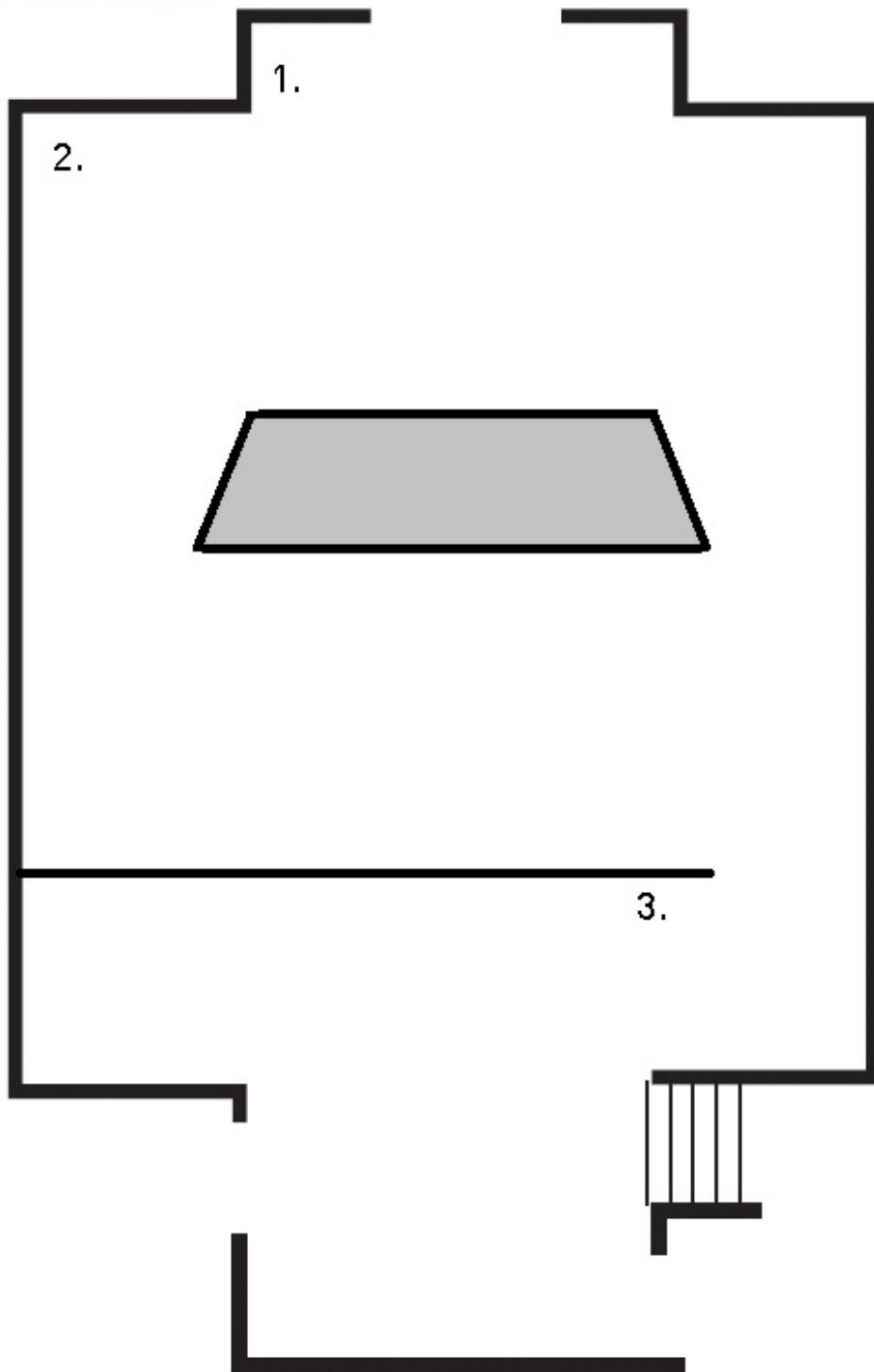


Please return to Information Desk

Benedict Drew *The Trickle Down Syndrome*

Floor Plan and Label Key

Gallery 1



1.

**Benedict Drew:
The Trickle-Down Syndrome**

The work contains a sense of the handmade, idiosyncratic, provisional and fantastical. I am interested in the feeling of submersion in social and environmental despair, being overwhelmed by images, confused by the shifting status of objects, disoriented by layers of history, trying to generate a state of being where you can escape, and seeing escape as a potent form of resistance, ecstatic protest.

Benedict Drew

Benedict Drew (b. 1977, Australia) offers a journey through five interconnected spaces, inspired by Hollywood director Busby Berkley's 1930s stage-sets and the Surrealist landscapes of Max Ernst, continuing his exploration of materiality where the physical and digital intersect.

The title refers to 1980s economic theory, which proposes that benefits for the wealthy will eventually trickle down to the rest of society. Drew imagines its effects by using psychedelic imagery, hand-drawn motifs, anthropomorphic sculptures and kaleidoscopic projections.

Across two screens, actor Gretchen Egolf describes the effects of socio-political and environmental issues in a rhythmical and fragmented account. Playing with the doubling of image and voice, the abstracted narrative mirrors the dissolving of forms in the exhibition, transporting us to a space of reflection.

Drew studied at the Slade School of Art, London and also composes and performs music. For Art Night 2017, Drew turns his installation into a musical score, collaborating with experimental musicians on a live, durational and climactic improvisation.

2.

Benedict Drew

The Trickle-Down Syndrome
2017

Installation

Courtesy of the artist and Matt's Gallery, London

3.

Benedict Drew

The Trickle-Down Syndrome
2017

Installation

Courtesy of the artist and Matt's Gallery, London

ACCESS INFORMATION

For details on parking, assistance dogs, adapted toilets, lifts, large print transcripts and free audio described tours or any other access facilities:

T +44(0)20 7522 7888

access@whitechapelgallery.org

Please return this booklet to Front of House.