

The logo for Whitechapel Gallery, consisting of a blue square with the text "Whitechapel Gallery" in white, positioned above a solid blue horizontal bar.

Whitechapel
Gallery

**Terrains of the Body:
Photography from the National
Museum of Women in the Arts**

18 Jan - 16 Apr 2017

Large print labels and interpretation

Gallery 7

From left, clockwise

Terrains of the Body:

Photography from the National Museum of
Women in the Arts

The artists in this display aim their cameras at the female body to express identity, communicate individual and collective experiences and give life to the imagination. The works are drawn from the collection of the National Museum of Women in the Arts in Washington, D.C., the only international museum dedicated to art made by women.

In contrast, **Rineke Dijkstra** (b. 1959, The Netherlands) creates uneasy portraits of young people, poised between childhood and the self-consciousness of adolescence. **Anna Gaskell** (b. 1969, USA) works with young girls to play out scenarios in dreamlike worlds in her photographs, while in her film *Erasers* (2005) schoolgirls recount in turn the story of the accident that killed the artist's mother.

(continues on next page)

Many works extend the scope of 1970s feminist art, including performance and video. *The Hero* (2001) by pioneering performance artist **Marina Abramović** (b. 1946, Serbia) pays tribute to her father, who fought as a Yugoslav partisan in World War II. While **Eve Sussman and the Rufus Corporation** (b. 1961, UK; founded 2003) offer a sumptuous still from their film, loosely based on the founding of Rome but set in an idealised 1960s.

Given the history of the female body as a political and cultural battleground, photographs of the fragmented or marked female figure bear a deep emotional charge. Images of inscribed, tattooed or scarred female bodies testify to dark political histories, made visible by **Shirin Neshat** (b. 1957, Iran), **Adriana Varejão** (b. 1964, Brazil) and **Mwangi Hutter** (Ingrid Mwangi, b. 1975, Nairobi; Robert Hutter, b. 1964, Germany). These complex and aesthetically compelling works tell a vital story of women, subjectivity and art.

Nan Goldin

Self-Portrait in Kimono with
Brian, NYC 1983
Cibachrome print

National Museum of Women
in the Arts
Promised gift of Steven
Scott, Baltimore, in honor of
the National Museum of
Women in the Arts' tenth
anniversary



Anna Gaskell

Untitled #104 (A Short Story
of Happenstance),

2003

Chromogenic print

National Museum of Women
in the Arts

Gift of Heather and Tony

Podesta Collection,

Washington, D.C



Candida Höfer

Palazzo Zenobio Venezia III

2003

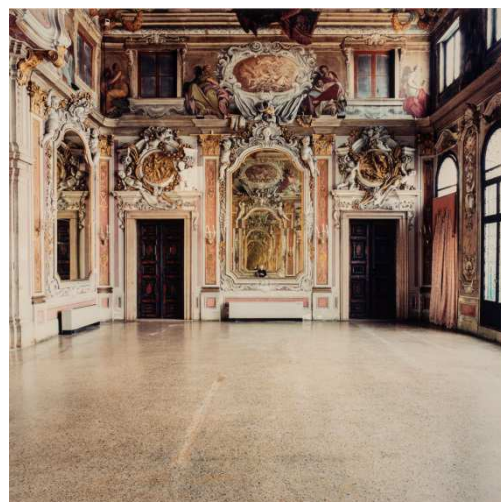
Chromogenic print

National Museum of Women
in the Arts

Gift of Heather and Tony

Podesta Collection,

Washington, D.C.



Justine Kurland

Raft Expedition, 2001

Waterfall Mama Babies, 2006

Chromogenic prints

National Museum of Women
in the Arts

Gift of Heather and Tony

Podesta Collection,

Washington, D.C



Rineke Dijkstra

Kolobrzeg, Poland, July 23,
1992, 1992

Chromogenic print

National Museum of Women
in the Arts

Gift of Heather and Tony

Podesta Collection,

Washington, D.C.

n/a

From left to right:

Hellen van Meene

Untitled (83), 2000

Untitled (151), 2002

Untitled (68), 1999

Untitled (79), 2000

Chromogenic prints

National Museum of Women
in the Arts, Gift of Heather
and Tony Podesta Collection,
Washington, D.C.



Kirsten Justesen

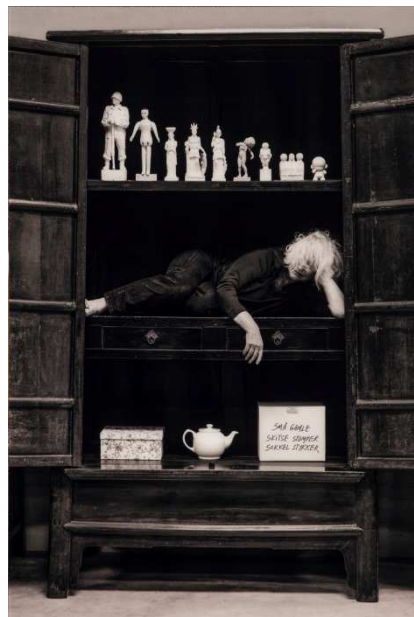
Portræt I Arkiv Med Samling

[Portrait in cabinet with
collection], 2013

Chromogenic print mounted
on Dibond with matte acrylic

National Museum of Women
in the Arts

Gift of Montana Møbler A/S



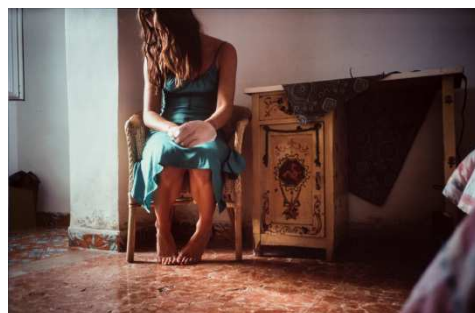
Janaina Tschäpe

He Drowned in Her Eyes as

She Called Him to Follow

(Capri Interior), 1999

Cibachrome print mounted on
aluminum



(continues on next page)

National Museum of Women
in the Arts
Gift of Heather and Tony
Podesta Collection,
Washington, D.C.

Marina Abramović
The Hero, 2001
Chromogenic print

National Museum of Women
in the Arts
Gift of Heather and Tony
Podesta Collection,
Washington, D.C.



From left to right:

Icelandic Love Corporation

Where Do We Go from Here?,
2000

Laserchrome print mounted
on Diasec

**Eve Sussman and the Rufus
Corporation**

Themis in the Birdcage

(photographic still from *The
Rape of the Sabine Women*),

2005

Chromogenic print



Charlotte Gyllenhammar

Fall III

1999

(continues on next page)



Cibachrome print mounted on
aluminum

National Museum of Women
in the Arts

Gift of Heather and Tony
Podesta Collection,
Washington, D.C.

Nikki S. Lee

The Hip Hop Project (1), 2001

The Ohio Project (8), 1999

Fujiflex print

National Museum of Women
in the Arts

Gift of Heather and Tony
Podesta Collection,
Washington, D.C.



Daniela Rossell

Medusa, 1999

From the “Ricas y famosos”
series

Chromogenic print

National Museum of Women
in the Arts

Gift of Heather and Tony

Podesta Collection,

Washington, D.C.



MwangiHutter

(Ingrid Mwangi, Robert
Hutter)

Shades of Skin, 2001

Chromogenic prints
mounted on aluminum



National Museum of Women in the Arts Gift of Heather and Tony Podesta Collection, Washington, D.C.	
--	--

ACCESS INFORMATION

For details on parking, assistance dogs, adapted toilets, lifts, large print transcripts and free audio described tours or any other access facilities:

T +44(0)20 7522 7888

access@whitechapelgallery.org

Please return this booklet to Front of House.