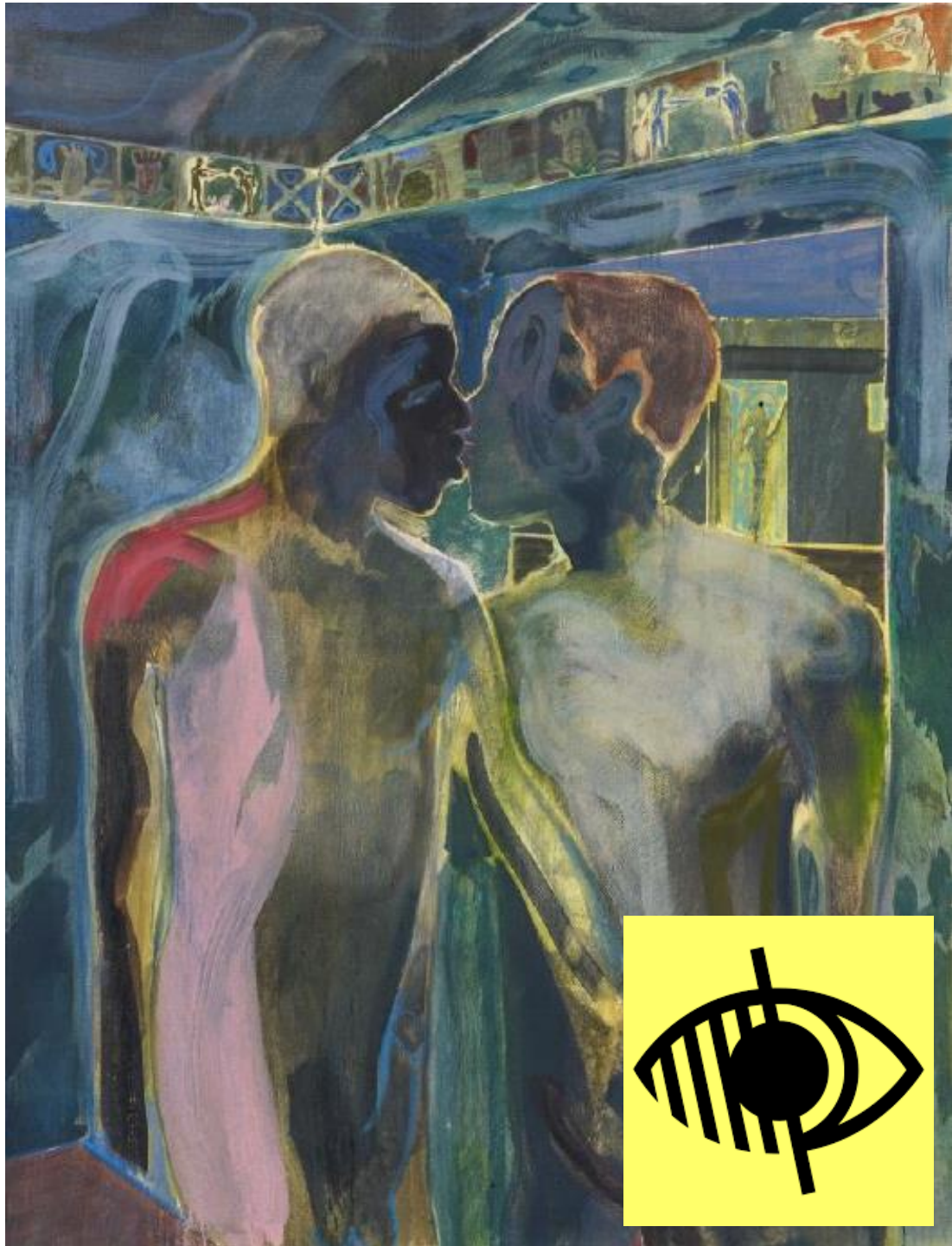


Whitechapel Gallery

Large Print Season Guide

January – April 2020

Art/ Performance/ Talks/ Films/ Courses/ Late Night Events



Contents:

Radical Figures: Painting in the New Millennium	3-5
Carlos Bunga: Something Necessary and Useful.....	6-8
In the Eye of Bambi "la Caixa" Collection of Contemporary Art Selected by Verónica Gerber Bicecci.....	9-11
Rachel Pimm: Plates.....	12-14
The Return of the Spirit in Painting.....	15-16
Artists' Film International	17-19
Events	20-35
Whitechapel Gallery Members.....	35
First Thursdays	36
Schools and Teachers	36-38
Families.....	39-40
Youth.....	40-42
Community	42-43
Kai Althoff.....	44
Shop: Editor's Pick.....	45-48
Gallery Information.....	48-51

Document continues on next page.

6 February – 10 May 2020

Galleries 1, 8 & 9

Exhibition

Radical Figures: Painting in the New Millennium

Since painting was pronounced dead in the 1980s, a new generation of artists has been revitalising the expressive potential of figuration. Charging their vibrant canvases with a social and political undertow, they echo the words of Philip Guston: ‘I got sick and tired of all that Purity. I wanted to tell stories’. The paintings of **Daniel Richter** (b. 1962, Germany) draw from current events – the migrant crisis or Taliban mythology – as do **Michael Armitage**’s (b. 1984, Kenya) narratives of politics and violence in East Africa, equivocally conveyed in the lush, exoticised style of Gauguin. The rollicking surfaces of **Cecily Brown**’s (b. 1969, UK) canvases congeal into figures, whose sources range from pornography to art history, before dissolving back into painterly marks. **Nicole Eisenman**’s (b. 1965, France) protagonists occupy a brightly lit universe that is both dream and nightmare,...

Document continues on next page.

...while **Dana Schutz's** (b. 1976, USA) contorted figures give form to unconscious drives. **Tala Madani's** (b. 1981, Iran) primal fantasies of abject men and children shift from comedy to debasement, from paint to shit. **Sanya Kantarovsky** (b. 1982, Russia) and **Ryan Mosley** (b. 1980, UK) look to art history, literature and children's stories in their darkly humorous and carnivalesque scenes. Artists also critique from within or expand on the styles and subjects of canonical male painters. In **Christina Quarles's** (b. 1985, USA) canvases, groups of polymorphous nudes are intimately entwined, merging with graphically patterned surfaces. **Tschabalala Self** (b. 1990, USA) pieces together paint, fabric and print for a cast of characters inspired by the streets of Harlem. Exuberant and explicit, each artist revels in the expressive potential of paint.

Ticketed

Free with membership

#RadicalFigures

Document continues on next page.

Exhibition catalogue: Radical Figures: Painting in the New Millennium £24.99

Event Highlight:

Figurative Painting Now: Artists in Conversation

Talk

Thurs 6 Feb, 7pm

£9.50/£7.50 concs

Supported by:

B I S T R O T H E Q U E

The Radical Figures Exhibition Circle

Document continues on next page.

21 January – 6 September 2020

Gallery 2

Commission

Carlos Bunga: Something Necessary and Useful

‘When we walk in that space we are walking between the past and the future and we are the present’. **Carlos Bunga** (b. 1976, Portugal) creates monumental structures out of everyday materials to propose architecture as transitory and corporeal in his first major UK commission. Bunga makes cardboard constructions and repurposes domestic furnishings to create an evolving installation in dialogue with the historic interiors of the gallery and its public. He encourages us to get lost in the painted surfaces and openings he creates, to wander among items of adapted mobile furniture, and gaze up at large textured hanging canvases. Bunga draws on his own experience of displacement and loss; but he is also inspired by the American Shaker movement’s insistence on simplicity in their interiors and furniture, exploring what is necessary and useful in art, architecture and design....

Document continues on next page.

...This new commission changes throughout the exhibition as it is cut by its maker, reconfigured and then destroyed.

Bunga also invites the choreographer **Joe Moran** and dancers to perform in the gallery during the course of the exhibition, exploring their shared interest in the relationship among bodies, physical space and time.

Free Entry

#CarlosBunga

Event Highlights:

Materiality Will Be Rethought: Part One

Performance

Thurs 19 Mar, 7pm

£5/£3.50 concs

Document continues on next page.

Supported by:

The Whitechapel Gallery

Commissioning Council

Erin Bell

Heloisa Genish

Leili Huth

Irene Panagopoulos

Catherine Petitgas

Mariela Pissioti

Alex Sainsbury

The Carlos Bunga Exhibition Circle



Document continues on next page.

14 January – 19 April 2020

Gallery 7

Collection

In the Eye of Bambi

**"la Caixa" Collection of Contemporary Art Selected by
Verónica Gerber Bicecci**

A forest creeper invades the gallery with its sinuous tendrils. This hanging sculpture by **Concha García** (b. 1960, Spain) is made of bright red wool, alerting us to the danger that all is not right in the world. Nearby, an enlarged eye looks out at the viewer from a circular painting by **Victoria Civera** (b. 1955, Spain). It is revealed as the eye of Disney's plucky fawn orphaned by the destructive actions of humans and the protagonist of *Bambi, A Life in the Woods* (1924) by **Felix Salten**, one of the first environmental novels. These works have been selected by writer and visual artist **Verónica Gerber Bicecci** (b. 1981, Mexico) from "la Caixa" Collection of Contemporary Art....

Document continues on next page.

Bicecci proposes a science fiction scenario titled *En el ojo de Bambi* (In the Eye of Bambi) based on the aftermath of an apocalyptic event and envisioned by **Carlos Amoraes** (b. 1970, Mexico) in his animated film *Useless Wonder* (2014). In this double-sided projection, the world map disintegrates into small fragments on one side while on the other humans and animals struggle to co-exist. Bicecci's narrative explores the effects of human and environmental catastrophe on landscape and language. Tiny ceramic trees range across the canvas of **Carmen Calvo's** (b. 1950, Spain) painting like a 'cemetery of nature'. *Fait #7* by **Sophie Ristelhueber** (b. 1949, France) examines through photography the debris-strewn and scarred landscape of war. **Bleda y Rosa** (b. 1969 and 1970, Spain) revisit the sites of colonial-era battles in Latin America where they photograph the now empty places where there was once human life. In a second work by Civera, *A-be-ce-da-rio* (1991), we are presented with a new alphabet of painted forms which point to an uncertain and changeable future.

Document continues on next page.

Free Entry

#laCaixaCollection

Exhibition publication: In the Eye of Bambi

Softback: £14.99

Event Highlights:

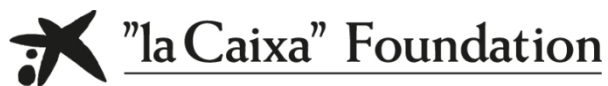
Stories at the End of the World

Talk

Sat 8 Feb, 3pm

£9.50/£7.50 concs

Exhibition Partner:



Document continues on next page.

14 January – 19 April 2020

Galleries 5 & 6

Writer in Residence

Commission

Rachel Pimm: Plates

You enter a shifting landscape. The tectonic plates are moving beneath you. What can you hear? *Plates* is based on field work undertaken in Ethiopia and Northern Ireland by artist **Rachel Pimm** (b. 1984, Zimbabwe) with a soundtrack by **Lori E. Allen** (b. 1975, USA). For this commission, the artists create a visual and sonic topography with words, images and sounds that have been collected from an archive of self-similar images of biological, geological and physical matter. The space becomes an index of ‘plates’, representing materials located around volcanic landscapes such as the Giants Causeway (Northern Ireland) and the Afar Triangle (Ethiopia) geological sites where minerals, salts and lava boil to the crust making dynamic, continually fluctuating landscapes.

Document continues on next page.

Pimm's reading of landscape and its patterns renders visible a perpetual state of erosion and flux. Non-human agents such as plants, fungi, minerals as well as mathematical forces take a central position. Challenging patriarchal frameworks of scientific study and embedding queer sensibilities in the reading of 'natural history' Pimm questions how language and words define and control the environment. Drawing on a year as Whitechapel Gallery Writer in Residence that unfolded through a series of live performances, readings and eatings – Disintegration, Tessellation and the forthcoming Aggregation – the artist reflects on the relationship between neo-colonialism and ecology and hierarchies of being, speaking-for and listening-to.

Free Entry

#RachelPimm

Document continues on next page.

Event highlights:

Political Geologies: Rachel Pimm and Amy Donovan

Talk

Thurs 20 Feb, 7pm

£9.50/£7.50 concs

Aggregation

Performance

Thurs 26 Mar, 7pm

£5/£3.50 concs

Supported by:

The Whitechapel Gallery

Commissioning Council

Erin Bell

Heloisa Genish

Leili Huth

Irene Panagopoulos

Catherine Petitgas

Mariela Pissioti

Alex Sainsbury

Document continues on next page.

5 February – 23 August 2020

Gallery 4

Archive

The Return of the Spirit in Painting

After a decade of conceptual and minimal art, the 1981 exhibition *A New Spirit in Painting* at London's Royal Academy of Arts, took the art world by storm. Lavishly painted, epically scaled canvases reasserted the centrality of painting – and the hand of the artist. The 38 exhibitors hailed from Europe and America and were exclusively male. Was this show revolutionary or reactionary? Was it a corrective to the anti-aesthetic art of the 1970s? Or was it, as critic Benjamin Buchloh claimed, a reaffirmation of 'the politics of a rigid conservatism'? This seminal show was curated by RA Exhibitions Secretary Norman Rosenthal, Nicholas Serota, then director of the Whitechapel Gallery, and independent curator Christos M. Joachimides...

Document continues on next page.

...It was to be the fountainhead for a sequence of solo surveys organised by Nicholas Serota at the Whitechapel Gallery of painters including Georg Baselitz, Cy Twombly, Anselm Kiefer, Malcolm Morley and Julian Schnabel. Privileging history, mythology and the sublime, their work came to define the tendencies in painting in the 1980s. The Return of the Spirit in Painting presents works by artists in the original shows, including **Georg Baselitz, Bruce McLean and Julian Schnabel**, as well as significant archive material from the Whitechapel Gallery and the Royal Academy of Arts.

Free Entry

#SpiritInPaint

Event highlights:

Exhibition Histories: Nicholas Serota

Talk

Thurs 12 Mar, 7pm

£9.50/£7.50 concs

Document continues on next page.

21 January – 24 May 2020

Zilkha Auditorium

Exhibition

Artists' Film International

Throughout 2020, this global survey of moving image works explores the theme of language.

21 January – 22 March 2020

The imagery in *Junkanoo Talk* (2017) by **Rhea Storr** (b. 1991, UK) unfolds like a language without words. *Junkanoo* is a carnival of the Bahamas; vivid shots of festival costumes are accompanied by sounds made on the body to the beats of Bahamian Rake 'n' Scrape. The five short videos in *YOU ARE BORING!* (2015), **Vika Kirchenbauer** (b. 1983, Germany) investigate 'looking' and 'being looked at'. By subverting the language of marketing, the artist draws attention to commodified bodies and actions. **Yu Gou** (b. 1983, China) explores *Jiéjiè* (Enchantment) (2019), a Buddhist term describing the protective 'zone' created through a collective consciousness. Guo analyses this concept within heavily mediated urban environments.

Document continues on next page.

24 March – 24 May

Wanda, the alter ego of **Dominika Olszowy** (b. 1982, Poland), loves to destroy things which she calls ‘acts of art’. By expressing socially unacceptable desires the artist asks can vandalism be an act of emancipation? In *My pictures of you* (2017), **Lisa Tan** (b. 1973, USA) speculates on how NASA images from Mars might be a death mask of Earth. Conflating both planets, the film tracks her conversations with a specialist, as she composes a eulogy to Earth. *Inscriptions (One Here Now)* (2018) by **Ailbhe Ní Bhriain** (b. 1978, Ireland) delves deep into a quarry. The camera traces geological strata, notations and scars left by machinery marking human agency in the disappearance of landscape.

Free Entry

#ArtistsFilmInternational

Artists’ Film International (AFI) is a partnership of 22 international organisations that celebrates moving image.

Document continues on next page.

Partners are: Ballroom Marfa, Marfa, Texas, USA; Belgrade Cultural Centre, Belgrade, Serbia; Bonniers Konsthall, Stockholm, Sweden; CAC, Vilnius, Lithuania; Centre for Contemporary Arts Afghanistan (CCAA), Kabul, Afghanistan; Crawford Art Gallery, Cork, Ireland; Fundacion PRÓA, Buenos Aires, Argentina; Galleria D'Arte Moderna e Contemporanea, Bergamo, Italy; Hammer Museum, Los Angeles, USA; Hanoi DOCLAB, Hanoi, Vietnam; Istanbul Modern, Istanbul, Turkey; Friends of Iziko South African National Gallery, Cape Town, South Africa; KWM artcentre, Beijing, China; Mahera and Mohammad Abu Ghazaleh Foundation, Amman, Jordan; Moscow Museum of Modern Art, Moscow, Russia; Museum of Modern Art, Warsaw, Poland; Video-Forum of Neuer Berliner Kunstverein (n.b.k.), Berlin, Germany; Para Site, Hong Kong; Project 88, Mumbai, India; Tromsø Kunstforening, Tromsø, Norway; Whitechapel Gallery, London, UK; The Whitworth, The University of Manchester, UK. Rhea Storr is selected by Whitechapel Gallery; Vika Kirchenbauer by n.b.k.; Yu Guo by KWM artcentre; Dominika Olszowy by Museum of Modern Art, Warsaw; Lisa Tan by Bonniers Konsthall; Ailbhe Ní Bhriain by Crawford Art Gallery.

Document continues on next page.

Events

January:

Penny Woolcock:

Class Actions

Film

Thursday 9 January, 7pm

£9.50/£7.50 concs

The acclaimed and profoundly engaged filmmaker and artist presents two of her powerful and unsettling documentary films, *Going to the Dogs* and *Same Road Different Road*, which investigate the discrepancies of our relationship to animal cruelty and the often fatal divergences in neighbourhood experience. Followed by an extended conversation between Woolcock and artist Andrea Luka Zimmerman.

Document continues on next page.

Rhea Storr: Carnival

Film

Thursday 16 January, 7pm

£9.50/£7.50 concs

To launch our Artists' Film International 2020 programme on the theme of language, London based artist Rhea Storr shares and discusses three key works: *Junkanoo Talk* (2017), *A Protest, A Celebration, A Mixed Message* (2018), and *Bragging Rights* (2019). Each film approaches carnival as a space of both celebration and protest, in shorts that explore the social structures, costume and language of carnival, the visibility of black bodies in rural spaces and her identity as an artist of Bahamian and British heritage.

Anne Robinson: Wakeful

Film

Thursday 23 January, 7pm

£9.50/£7.50 concs

Artist filmmaker Anne Robinson presents and is in conversation about her long-term, multi disciplinary project *Wakeful...*

Document continues on next page.

...Building on family histories and looking back to a 1918 sea voyage, she experiments with film technologies to record time strangely: performers re-inhabit conflict zones and long gone soundscapes seep into the present.

Tereza Stehlikova and Steven Fowler: Worm Wood

Film

Thursday 30 January, 7pm

£9.50/£7.50 concs

Artist and filmmaker Tereza Stehlikova and writer Steven J Fowler present and are in conversation about some of the work produced for their ongoing Worm Wood project, concerned with a part of North West London which is about to be transformed forever due to the Old Oak urban development. Their aim has been to capture some of these unique places and spaces, in order to preserve them.

Document continues on next page.

February:

Figurative Painting Now:

Artists in Conversation

Talk

Thursday 6 February, 7pm

£9.50/£7.50 concs

Artists Michael Armitage, Ryan Mosley and Tschabalala Self are in conversation with Whitechapel Gallery Chief Curator Lydia Yee to discuss their work in the context of our latest exhibition *Radical Figures: Painting in the New Millennium*.

Stories at the End of the World

Talk

Saturday 8 February, 3pm

£9.50/£7.50 concs

Drawing on the exhibition *In the Eye of Bambi*, which uses seven artworks to tell a story of ecological collapse resulting in both the end of humanity and the beginning of new life forms, the Mexican author Veronica Gerber Bicecci...

Document continues on next page.

...is in conversation with translator Christina MacSweeney on the occasion of this final display in the "la Caixa" Collection series.

**Concrete & Ink: Storytelling and the Future
of Visionary Architecture
Symposium**

Thursday 13 – Saturday 15 February

From £9.50/£7.50 concs

check website for details

Is there a path between utopian and dystopian visions of future cities? What role can storytelling have in our urban imaginaries? This three-day interdisciplinary programme brings together writers, poets, artists, filmmakers, architects, philosophers, urbanists, curators and academics to search for alternative modes of narrating the future of buildings, housing estates and cities. Including Adesola Akinleye, Corina Angheloiu, Jodie Azhar, Julian Baggini, Crystal Bennes, Owen Hatherley, Alison Irvine, Meneesha Kelley, Océane Ragoucy and Christopher Ian Smith.

In association with Theatrum Mundi.

Document continues on next page.

**British Sign Language Tour: Radical Figures
Tour**

Thursday 20 February, 6pm

Free, booking required

Join us to explore the exhibition, led by John Wilson in British Sign Language. For our d/Deaf and hard of hearing visitors.

To book a free place, please email
access@whitechapelgallery.org

Political Geologies: Rachel

Pimm and Amy Donovan

Talk

Thursday 20 February, 7pm

£9.50/£7.50 concs

To coincide with Pimm's current exhibition Plates, they are joined in conversation by Geographer Amy Donovan on the politics embedded in geology and how new readings of the environment are essential to reframing our relationship to the earth.

Document continues on next page.

Open Screenings

Film

Thursday 27 February, 5pm

Free, booking required

Meet emerging and established artist filmmakers as they present their short film work and discuss it with peers and Adjunct Film Curator Gareth Evans.

To take part in future screenings:

film@whitechapelgallery.org

Emily Richardson: House Works

Film

Thursday 27 February, 7pm

£9.50/£7.50 concs

Artist filmmaker Emily Richardson presents the premiere screening of her 'house works' trilogy, three short films (3 Church Walk, Beach House and Spender House) exploring radical domestic spaces in Essex and Suffolk. She is joined in conversation with collaborator, writer and curator Jonathan Watts following the screening.

Document continues on next page.

Of Mud and Flame: Penda's Fen and the World Beyond

Film

Saturday 29 February, 3.30pm

£9.50/£7.50 concs

Marking Strange Attractor Press' publication of a remarkable new source book exploring the multiple realities of playwright David Rudkin's legendary, mystical 1974 television drama, the writer is joined by the book's editors and leading actor Spencer Banks to consider the ongoing influence and implications of this radical and deeply engaged work.

March

Ailbhe Ní Bhriain: Inscriptions of an Immense Theatre

Film

Thursday 5 March, 7pm

£9.50/£7.50 concs

Artist Ailbhe Ní Bhriain presents and speaks about her new work, which draws us in to a world where museum collections are under water,...

Document continues on next page.

...birds of prey inhabit abandoned factories and haphazard stage-sets

evoke lost landscapes. Combining film and computer generated imagery, *Inscriptions of an Immense Theatre* depicts diverse histories and systems of belief in a shared state of environmental aftermath, following the work on display as part of Artists' Film International 2020.

Audio Description Tour: Radical Figures

Tour

Thursday 12 March, 5pm

Free, booking required

A tour with tactile images through our major exhibition of 21st Century figurative painting. For blind and partially sighted visitors. To book a free place, please email access@whitechapelgallery.org or call +44 (0)20 7522 7888

Document continues on next page.

Exhibition Histories: Nicholas Serota

Talk

Thursday 12 March, 7pm

£9.50/£7.50 concs

Nicholas Serota is in conversation with Whitechapel Gallery Curator Nayia Yiakoumaki to reflect on a period of his directorship at Whitechapel Gallery that featured exhibitions by key late 20th century painters. The conversation considers these exhibitions in context of Serota's involvement with *A New Spirit in Painting* (1981) at the Royal Academy of Arts, an exhibition he co-curated with Christos M. Joachimides and Normal Rosenthal that proved seminal for painting in the 1980s. In association with *Afterall*.

Materiality Will Be Rethought: Part One

Performance

Thursday 19 March, 7pm

£5/£3.50 concs

The first in a series of three live performances until summer 2020, Joe Moran presents new choreographic works in dialogue with Carlos Bunga's commission.

Document continues on next page.

Rachel Pimm: Aggregation

Performance

Thursday 26 March, 7pm

£5/£3.50 concs

Taking its title from geological terminology, in this final event as Writer in Residence Rachel Pimm is joined by special guests Jennifer Boyd and Katrina Black for a staged reading of collected texts on landscapes. Informed by the practice known as geophagy, readings are accompanied by a tasting menu of earth-based appetisers, producing live landscape-to-mouth aggregations.

Burn it Down! Feminist Manifesto Reading Group

Workshop

Saturday 28 March, 3pm

£5/£3.50 concs

A discussion session and close guided reading of selected manifestos in this landmark collection spanning four generations of feminist activism and writing. Burn It Down is a window on historical feminist thought, providing a prompt to consider contemporary activisms....

Document continues on next page.

...This event launches the series **Feminist Resistance: Strategies for the 21st Century** in partnership with Verso to mark their 50th anniversary.

April

Eco-Imaginaries: Science Fictions, Speculative Futures

Talk

Thursday 2 April, 7pm

£9.50/£7.50 concs

To launch *Science Fiction*, the latest in the Documents of Contemporary Art series of anthologies, this event delves into the final chapter – *Ecologies* – to consider the politics and societal implications of imagining our future planet(s) with or without the human race. With speakers including guest editor Dan Byrne-Smith and artists Angela Chan and David Musgrave. This event launches *Science Fiction*, the latest in the Documents of Contemporary Art anthology series published by Whitechapel Gallery and MIT Press.

Document continues on next page.

FLAMIN Fellowship Screenings

Film

Saturday 4 April, 3pm - 5.30pm

£9.50 / £7.50 concs

Presenting new and recent work

by the six artists – Hazel Brill, Max Colson, Maud Craigie, Milo Creese, Antonia Luxem and Jennifer Martin – who have participated in The FLAMIN Fellowship, a major scheme for early career artist filmmakers. Join the featured artists for a shared discussion following the screenings. Presented in association with FLAMIN, Arts Council England and The Fenton Arts Trust.

Big Ideas: Priyamvada Gopal

Talk

Thursday 9 April, 7pm

£9.50/£7.50 concs

The author of *Insurgent Empire: Anticolonial Resistance and British Dissent* joins us as part of the series *Feminist Resistance: Strategies for the 21st Century* in partnership with Verso in a programme marking their 50th anniversary. Gopal shares reflections on feminist narratives...

Document continues on next page.

...from the body of research, which looks at how Britain's enslaved and colonial subjects were active agents in their own liberation, and in turn shaped British ideas of freedom and emancipation. Supported by the Stanley Picker Trust. This event forms part of the series Feminist Resistance: Strategies for the 21st Century in partnership with Verso to mark their 50th anniversary.

Eva Aridjis: Chuy Man

Film

Thursday 16 April, 7pm

£9.50/£7.50 concs

In the first of two programmes of her distinctive documentary essay films on Mexican lives that are disenfranchised, marginalised or discriminated against, Eva Aridjis introduces Chuy Man, following an extended family who suffer from 'werewolf syndrome': a visually arresting and engaged work of witness.

Document continues on next page.

Eva Aridjis: Saint Death and Children of the Street

Film

Saturday 18 April, 2pm-6pm

£12.50 / £10.50 concs

Aridjis introduces and discusses her investigation of the growing Mexican cult of 'Saint Death', a female grim reaper worshipped by those with traumatic lives, and follows four children living on Mexico City's challenging streets.

Armenia Remembered: Taniel

Film

Thursday 23 April, 7pm

£9.50/£7.50 concs

On the eve of the annual Armenian Genocide Remembrance Day, Garo Berberian presents his awardwinning film Taniel, exploring the life, work and death of poet Taniel Varoujan, alongside readings by Chris McCabe, poet and editor of Poems from the Edge of Extinction, exploring threatened languages and communities.

Document continues on next page.

Audio Description Tour: Radical Figures

Tour

Thursday 30 April, 6pm

Free, booking required

A tour with tactile images through our major exhibition of 21st Century figurative painting. For blind and partially sighted visitors. To book a free place, please email access@whitechapelgallery.org or call +44(0)20 7522 7888

Book early to avoid disappointment: Tickets can be purchased in advance via our website or by calling the box office on +44 (0)20 7522 7888

Whitechapel Gallery Members

Join our creative community of art lovers and artists. Enjoy all exhibitions for free (and bring a friend). Save money and treat yourself at the gallery bookshop and café. Get special access and invitations. To join visit whitechapelgallery.org

Document continues on next page.

First Thursdays

Every first Thursday of the month, until 9pm

Explore culture in the heart of east London with special late night openings taking place in the Gallery and surrounding areas. Join our Bus Tour or pick up a self-led Walking Tour map to see our highlighted exhibitions, previews and talks.

Schools and Teachers

Teachers' Preview and Workshop

Thursday 13 February, 5–7.30pm

Join us on a curator's tour of Radical Figures, exploring contemporary approaches to figurative painting. Followed by an artist-led workshop to draw out processes and themes inspired by the exhibition.

Teachers' Writing Workshop

Thursday 12 March, 5–7pm

Explore the potential of art to inspire creative writing...

Document continues on next page.

...Works selected from "la Caixa" Collection of Contemporary Art, by writer Verónica Gerber Bicecci, form the backdrop to this practical writing workshop, led by National Writing Project.

School Workshops

March – April

Two-hour workshops adaptable for all ages. From loose gestural brushwork to thick impasto paint, this workshop guides students through a range of experimental painting techniques inspired by the works in Radical Figures.

Supported by Tower Hamlets Arts and Music Education Service.

Self-led Gallery Visits

Tuesday – Friday from 11.30am

Book a self-directed visit to explore the current exhibitions, including an introduction to the Gallery, teachers' notes and use of the Clore Creative Studio.

Document continues on next page.

Artist Residencies

Environmental activism and literature, architecture and community building and seats of power are just some of the creative themes recently explored through our artist residency programme with schools. This programme supports Artsmark. Please get in touch to register your interest.

Arts Award

Experiencing exhibitions by renowned artists, developing critical perspectives and creating your own artwork with professional artists can all help to gain Arts Award qualifications. Get in touch to discuss how we can best support your students. Whitechapel Gallery is a registered Arts Award Centre.

Schools and Teachers events and workshops are free unless otherwise stated. Booking is essential. For more information and bookings: education@whitechapelgallery.org

Document continues on next page.

Families

Reading is Fundamental

Wednesday 19 February

11.30am – 12.30pm

Reading is Fundamental is all about celebrating children's books with LGBTQAI+ themes and from authors of colour.

Join us for this storytelling session with a guest reader, held in the Radical Figures exhibition. Suitable for all ages.

Family Day: Radical Figures

Saturday 22 February

12–4pm

There's more to painting than paint, join us to explore gesture and movement using the Radical Figures exhibition as a backdrop and inspiration. Suitable for all ages.

Crib Notes: Radical Figures

Wednesday 4 March

11.30am – 12.30pm

Join a curator led tour of our exhibition perfect for parents/carers with children under the age of 4.

Document continues on next page.

Under 5s at Whitechapel Gallery

Saturday 21 March

2–4pm

These artist led sessions provide playful ways for families with children under the age of 5 to explore the gallery and engage with artworks.

Youth

Duchamp & Sons Taster Evening

Wednesday 15 January, 5–7pm

Creative Studio

Ages 15–21

Free, booking required

Are you interested in meeting new people and getting involved in creative projects? Join the Gallery's youth forum and work alongside artists and creative professionals.

Get behind the scenes insight, gain skills in curating events and exhibitions and learn more about careers in the arts.

Come along to find out more.

Document continues on next page.

Duchamp & Sons

Throughout January – June

Ages 15–21

Working with filmmaker Ayo Akingbade the youth forum explores themes of identity, personal and collective histories, and their relationship to public space through a series of collaborative workshops.

Painting Masterclass

13–17 April, 10am–4pm daily

Creative Studio

Ages 15–21

Free, booking required

Artist Sikelela Owen creates loose figurative paintings of family and friends using the process to deepen her relationships with her subjects. Gain an insight into her practice, experiment with a range of painting techniques and develop skills to create new work.

Document continues on next page.

For more information and bookings:

duchampandsons@whitechapelgallery.org

Check out live updates on projects and events. Instagram and Twitter @duchampandsons

Community

Voices That Matter

January–April

Addressing issues of gender, culture and language, this project offers local women a platform to connect with the Gallery, contemporary art and artists. Developed in partnership with City Gateway, Numbi and the Women's Environmental Network. Supported by Paul Hamlyn

Foundation For more information:

communityworkshops@whitechapelgallery.org

Document continues on next page.

Community Open View

13 February, 5–6.30pm

Join us for a curator led tour of the exhibition, followed by drinks and a chance to network with colleagues in our Study Studio.

Community Workshops

January – April

Explore the Radical Figures exhibition and take part in creative workshops with artist Lucy Steggals. These free two-hour sessions are tailored for those with little or no experience of art. Participants use mixed media to engage with ideas around the body. Supported by ZVM Rangoonwala Foundation.

Self-led Gallery Visits

Tuesday – Friday from 11.30am

Book a free self-led visit to explore the current exhibitions, including an introduction to the Gallery tailored to the needs of the group. For more information and bookings: communityworkshops@whitechapelgallery.org

Document continues on next page.

Upcoming: Kai Althoff

For his first institutional show in the United Kingdom in Summer 2020, **Kai Althoff** (b. 1966, Cologne, Germany) will present a large array of early works as well as many recent paintings and drawings. Another significant part will be dedicated to and include the work of **Bernard Leach** (1887–1979). “If I was to choose an Idol, and I herewith do, it would be him. The formal and contentual ‘problems’ and their resolution I naively assume him to have wrangled with, are the same I seem to be absorbed in endlessly, and I think he could resolve them with a result negating their existence. If my problems are the same, I hoped for my painting here to be like one of his pots.”

Document continues on next page.

Shop: Editor's Pick

Editions

Amalia Pica & 6a architects: 'Equal Footing', 2019

Glazed ceramic, rope, cedar wood

47 × 15 × 12 cm

Series of 20, each unique, accompanied by signed and numbered certificate

Full price: £850 including
VAT

Members' price: £765



Document continues on next page.

Helen Cammock: 'Kaleidoscope', 2019

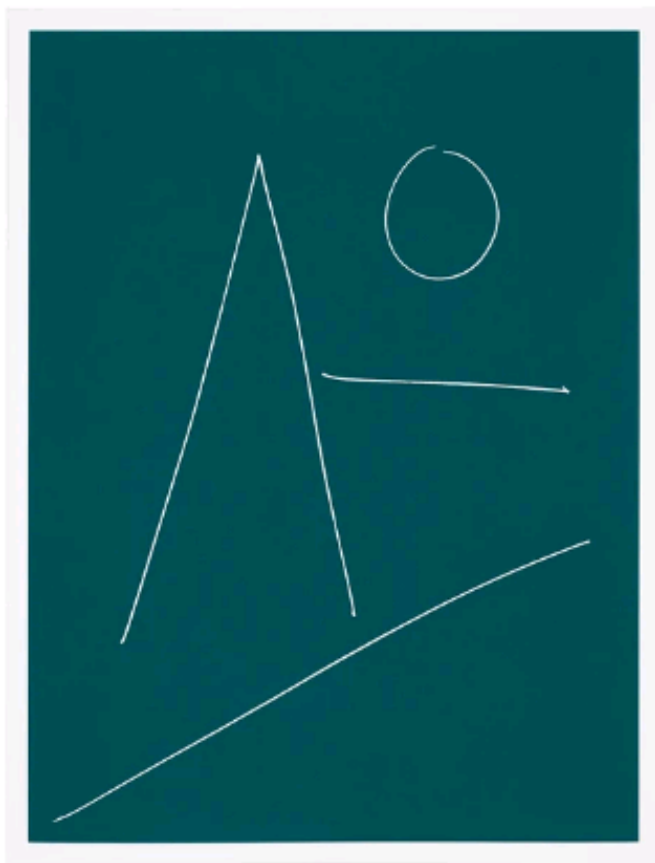
Diptych, silkscreen prints

Each 41.6 × 31.7 cm

Edition of 40, signed and
numbered by the artist

Full price: £450 including VAT

Members' price: £405



Document continues on next page.

Radical Figures Catalogue

Accompanying our major survey exhibition Radical Figures, the fully-illustrated catalogue presents key works by a new generation of figurative painters, including interviews with each artist and new essays by Lydia Yee and Daniel Culpan. £24.99

Books

Titles in our Documents of Contemporary Art series of anthologies.

Science Fiction

The brand new title in our Documents of Contemporary Art series, this is the first major anthology to focus on relationships between science fiction and contemporary art, and is an essential read for all those exploring this vital genre. Edited by Dan Byrne-Smith. £16.95

Document continues on next page.

Painting

A guide to the diverse meanings of contemporary painting since its post conceptual revival. Painting collects key texts that represent the medium's current multiple discourses.

Edited by Terry R. Myers. £16.95

Membership

Become a Member Support the Whitechapel Gallery and receive free entry to all our exhibitions, invitations to Season Openings and exclusive Member events, discounts on limited edition artworks and more.

Venue Hire

Whitechapel Gallery offers unique and multifunctional event spaces catering for all functions from intimate dinners to large scale conferences. whitechapelgallery.org/venue-hire
hire@whitechapelgallery.org +44 (0)20 7522 7877

Café / Restaurant

Enjoy delicious weekly changing menus for a long leisurely lunch or just a coffee and slice of cake.

+44 (0)20 7539 3303

Document continues on next page.

Bookshop

Buy beautiful art books exhibition catalogues, anthologies, gifts and cards in our Bookshop and online.

whitechapelgallery.org/shop

bookshop@whitechapelgallery.org +44 (0)20 7522 7897

Whitechapel Gallery

77–82 Whitechapel High Street

London E1 7QX

Aldgate East / Liverpool Street

T +44 (0)20 7522 7888

info@whitechapelgallery.org

Whitechapel Gallery is a registered charity, no. 312162

Access information

whitechapelgallery.org/visit/access

Follow

Twitter: [@_TheWhitechapel](https://twitter.com/_TheWhitechapel)

Facebook: [WhitechapelGallery](https://www.facebook.com/WhitechapelGallery)

Instagram: [WhitechapelGallery](https://www.instagram.com/WhitechapelGallery)

Document continues on next page.

E-news

whitechapelgallery.org/subscribe

Opening Hours

Tuesday – Sunday: 11am–6pm

Thursday: 11am–9pm

Monday: Closed

Thank you to our donors, patrons, members and other loyal supporters Future Fund Founding Partners:

Mahera and Mohammad Abu

Ghazaleh

Sirine and Ahmad Abu Ghazaleh

Swantje Conrad

Dimitris Daskalopoulos

Maryam and Edward Eisler

NEON

Sir Siegmund Warburg's Voluntary

Settlement

V-A-C Foundation



Document continues on next page.

The Whitechapel Gallery Education and Public

Programme is supported by: The Aldgate Partnership, The Arts Society Westminster, The Bawden Fund, Brick Lane Regeneration, Partnership, Capital Group, Derwent London, Paul Hamlyn Foundation, Paul Hedge and Paul Maslin, Hales Gallery, The Estate of, Howard Hodgkin, Mayor of London, The Newham Council, Enrichment Programme, ZVM Rangoonwala Foundation, SAHA Association, Stanley Picker Trust, Swarovski, Foundation, The London Borough of Tower Hamlets, Corporate Partners: Ace Hotel London, The Aldgate Partnership, Bistrottheque, Christie's, Brick Lane Regeneration, Partnership, Capital Group, Champagne, Castelnau, Derwent London, FRAME London, Hiscox: Artworks, Insurance Partner, Martinspeed, Max Mara, Collezione Maramotti, Omni Colour: Signage Partner, Pentagram, Phillips, SPLIT Music, Swarovski,

Whitechapel Gallery Corporate Patrons: Bloomberg Philanthropies, Frasers Property UK, Gazelli Art House, Modern Art, Phillips, SPLIT Music, White Cube, David Zwirner

Please return this booklet to the Information Desk after use.

End of Document.