

Whitechapel Gallery Venue Hire

hire@whitechapelgallery.org

020 7539 3325

whitechapelgallery.org/venuehire



About

Founded over 120 years ago with a mission to ‘bring great art to the people of East London’, the Whitechapel Gallery’s beautiful historic building now houses nine galleries, a restaurant, an auditorium, and two studio spaces dedicated to education and research.

When you walk through our doors you follow the footsteps of modern masters such as **Pablo Picasso, Jackson Pollock, Mark Rothko** and **Frida Kahlo** to pioneering contemporaries such as **Zarina Bhimji, Sophie Calle, Theaster Gates, Emily Jacir** and **Michael Rakowitz**, all of whom premiered at the Whitechapel Gallery.

We are pleased to open up our versatile spaces to those looking for a unique setting for their away day, evening reception or hybrid event under the expert guidance of our dedicated event planner.

By choosing the Whitechapel Gallery for your event you are directly supporting the internationally-recognised work of the Gallery and helping us to enrich the lives of more people through access to contemporary art.



Gallery 1 installation view of *A Century of the Artist's Studio: 1920-2020*, 24 February–5 June 2022.



Clore Creative Studio

The Clore Creative Studio is a bright and inspiring space offering views over East London's iconic skyline. This studio also has direct views of **Rodney Graham's** specially commissioned *Erasmus Weathervane* which sits on the roof of the Gallery and forms our first permanent public work of art.

The Clore Creative Studio is a space that encourages thought and creativity and is well suited to meetings and workshops. We can also provide HD screens, wireless microphones and technical support as part of our hybrid meeting offering. In the evening, this space is perfect for intimate seated dinners and standing drinks receptions.



Capacities

Boardroom 24
Theatre 60
Cabaret 36
Standing 60



Study Studio

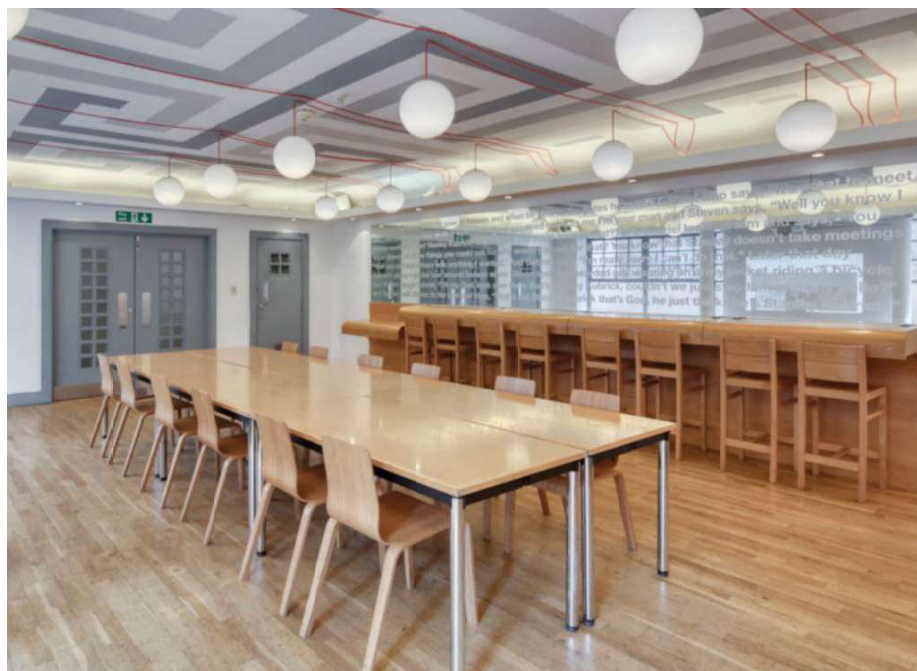
A light and bright thought-provoking space that sparks discussion, the Study Studio is perfect for smaller team meetings, creative workshops and presentations and comes fully equipped with built-in AV facilities.

On display in the Study Studio you'll find a selection of books from Europe's first and largest Bengali bookshop **Ruposhi Bangla Limited** celebrating the portrayal of women in literature.



Capacities

Boardroom 25
Theatre 40
Cabaret 18
Standing 60



Gallery 3

Gallery 3 is a versatile space located in the heart of the building at Mezzanine Level. It features two sculptures by artist **Liam Gillick** inspired by his appreciation for dystopia and the filmmaker Stanley Kubrick. Access to this space is through our main exhibition and we would encourage adding a guided tour or a drinks reception to make the most of the art on view.

Gallery 3 is also well suited to board meetings, presentations and can be used as a break-out space for refreshments to accompany an Auditorium hire.



Capacities

Boardroom 15
Theatre 30
Cabaret 18
Standing 80



The Zilkha Auditorium & Studio

With its unique seating designed by Turner Prize nominee **Liam Gillick**, The Zilkha Auditorium & Studio is a work of art in its own right. This injection of colour into our large and comfortable theatre space makes it well suited to inspiring discussion or panel debate.

The space benefits from cinema quality projection and comes equipped with a Full HD digital projector and 5.1 Surround Sound. The option to live stream events is also available with full technical support.



Capacities

Seated 96
 (Bespoke AV set-ups may reduce seated capacity)



The Foyer

Enter from Whitechapel Gallery High Street through our original stone arch entrance and you'll find our spacious Foyer on the ground floor offering high ceilings and unique architectural features, including the Grade II listed library staircase and a timeless interior.

Hire the space by itself or in conjunction with our current exhibition for larger drinks and canapé receptions with evening entertainment.



Capacities

Standing 250



Gallery Spaces

Our impressive galleries provide the opportunity to curate your event alongside the latest Whitechapel Gallery exhibition and allow exclusive out of hours access to your guests. As the former central reading room of the Whitechapel Library, Gallery 2 is a particularly impressive space that retains its original Victorian features alongside contemporary touches in the exposed brickwork and polished concrete floor.

Making up some of our largest spaces, Galleries 1, 2 and 8 can accommodate conferences, seated dinners and evening receptions as part of our dry hire option inbetween exhibitions.

Dry hire of our gallery spaces is limited so please do enquire for seasonal availability.

Capacities

Standing 40-300

Rates

	Day Rates* (Before 6pm)			Evening Rates* (7-11pm)	
	Full day (8 hrs)	Half day (4 hrs)	Hourly Rate (Min 2 hrs)	7-9pm (2 hrs)	7-11pm (4 hrs)
Gallery 3	£750	£400	£100	£750	£1,000
Study Studio	£850	£500	£125	£850	£1,100
Clore Creative Studio	£1,000	£700	£175	£1,000	£1,200
The Zilkha Auditorium	£1,400	£900	£225	£1,500	£2,000
Foyer (Evening hire only)				£1,700	£2,200

*all rates exclude VAT

All venue hire includes a dedicated inhouse event manager, use of tables, chairs, and flipcharts or whiteboards. Our standard AV offering includes a 65” 4k TV screen with HDMI connection and wireless conference call speaker and microphone. Free access to all paid exhibitions is available during normal opening hours.

Step free access is available throughout all of Whitechapel Gallery’s venue hire spaces.

Hire rates are not inclusive of additional staff, specialist AV support or security guard costs and these will be quoted separately.

We are pleased to offer a 10% discount to registered charities and local businesses within a mile.

Add-ons

Private Tours

Enhance your event at Whitechapel Gallery with the addition of a guided tour. Our Gallery experts will provide a unique insight as you explore key pieces from the exhibitions. Tours can take place from Tuesday to Sunday during normal Gallery opening hours (11am-6pm) for groups of up to 20 and last one hour.

Guided tours start from:

- £150 per hour – Exhibition Guide
- £450 per hour – Assistant Curator
- £650 per hour – Curator
- £950 per hour – Director

For those who wish to learn more about our current exhibitions exclusively, out-of-hours tours can be arranged. Please contact the Venue Hire Team for more information. Tours outside of public open hours are subject to additional staffing costs.

AV Packages

Looking to make your event accessible to a wider audience or wish to connect with your colleagues who work from home?

Get in touch with us directly to discuss our bespoke AV offers including live streaming and hybrid meeting formats. A full AV Tech Menu is available upon request.

Townsend Restaurant



Our on-site restaurant Townsend focuses on modern British food with their seasonal menus offering high quality, locally sourced produce. Townsend opened in January 2020 to national reviews and was recently voted one of the top 100 restaurants in London by Square Meal.

With catering menus for all occasions, Townsend can provide light refreshments for meetings and workshops through to curated menus for special occasions and they will be on hand throughout your event to ensure its smooth running.

For more information on Townsend's restaurant offer or catering options, please email info@townsendrestaurant.co.uk



Contact

For all venue hire bookings and enquiries please contact the Whitechapel Gallery Venue Hire Team:

hire@whitechapelgallery.org
020 7539 3325
whitechapelgallery.org/venuehire

For further information about catering, please contact Townsend:

info@townsendrestaurant.co.uk
020 7522 7896
whitechapelgallery.org/townsend

Whitechapel Gallery
77-82 Whitechapel High St
London, E1 7QX