

# 86

Whitechapel Open 1986

Lower and Upper Galleries: 24 January-16 February 1986

WHITECHAPEL

Catalogue

**DIRECTOR'S COPY**

## Introduction

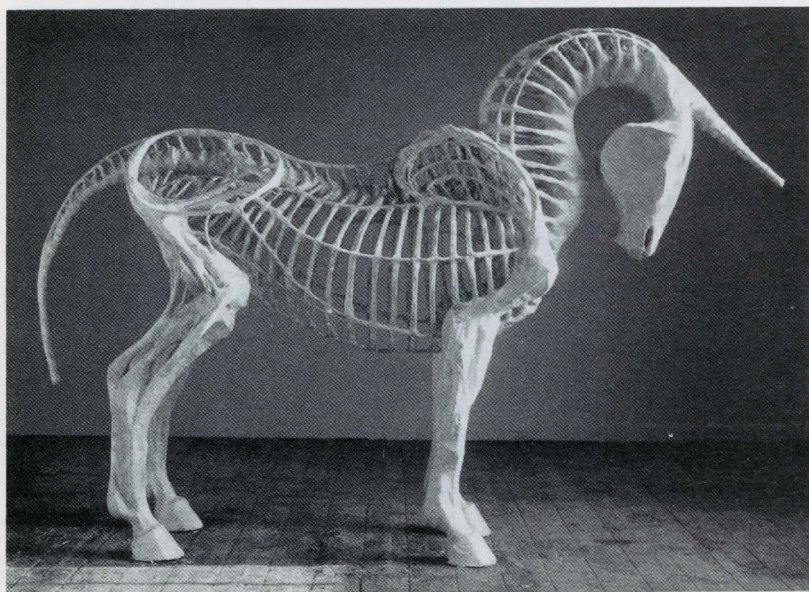
An annual show of local artists at the Whitechapel is almost an institution in East London, having existed virtually without break since 1913. Though it has only strictly been an *open* show since 1932 (previously having presented the work of local art clubs), it has always been locally based, participated in by working people as well as professional artists, and unusually independent of the West End art scene, such that until recently it had more in common with the annual Newlyn exhibitions in Penzance than with other group exhibitions in London. As with that community, its local identity was occasionally characterised by a certain provinciality as well as by enthusiasm and dedication.

This traditional identity changed drastically in the late 'sixties, as an increasing number of younger artists moved into the area to make use of derelict warehousing for studios, and as the long-established Jewish population was gradually replaced by new immigrant groups, particularly from Bangladesh.

For several years the Open exhibition lagged behind its fast-changing catchment area, and art practised by the various groups of newcomers was made and exhibited in some isolation. But in the late 'seventies a more out-going education programme on the part of the Whitechapel, and a drive to encourage wider participation in the exhibition, opened it up appreciably. The exhibition was re-named *The Whitechapel Open*. The date and duration of the show were changed, the categories of entry broadened, the catchment area extended, and the event was widely publicised. The result was a substantial increase in submissions, especially from *professional* artists – broadly, those whose first commitment is to their art. The unfamiliar mix of entries by this group with more traditional work by the so-called *Sunday painters* who had shown regularly, sparked off a minor, ultimately favourable, controversy in the local press.

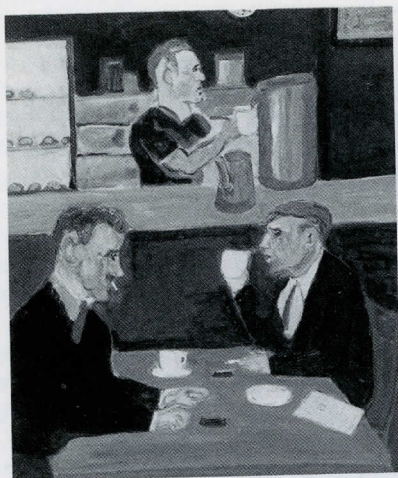
Nine years on, the aims of the Open exhibition are very much those that were set out in the catalogue introduction of the 1977 Open: principally, to bring together these traditionally separate groups, and to promote greater interaction not only amongst artists themselves but also between artists and the community in which they live and work. But the exhibition and the artistic community it represents have naturally undergone change as well as continuity in that time. One of the most important developments as far as the exhibition itself is concerned has arisen from its own success: in 1977 683 works (then a record) were entered by 376 artists; for the 1986 show 1,923 works have been entered by 1,034. This has implications both for the Whitechapel, particularly in the task of bringing together and selecting from such a large submission, and for the artists themselves. Now more than nine in ten necessarily experience disappointment at the outcome, and the problem raises questions about the possible need for further changes to the structure of the exhibition. However, it is interesting to note that the idea of the *Whitechapel Open* has been taken up elsewhere in London in the last three years, with the South London Open, Camden Open and Riverside Open exhibitions.

More far-reaching than developments in the exhibition itself, though, are the changes which have been occurring in the artistic community of East London. The 1977 Open catalogue introduction set out 'one particularly long-term wish: we see the Whitechapel Open as one way of extending the place of the visual arts in the area beyond the Gallery itself into a wider community', and encouraged proposals for exhibitions taking place in such venues as 'pubs, hospitals, schools and factories'. In fact the idea invited little direct response. Yet perhaps the biggest change local arts activity has undergone since then is just such an integration of artists in the wider social community, and their active initiation of exhibitions and events in and beyond the studio. Not only do many artists organise and publicise the opening of their studios regularly to the public, but many, partly impelled by the continued shortage of good exhibition space in the area, now put on exhibitions of their work in such places as libraries and swimming pools, where at least they are seen by the general public, even though few sales may result. Art Place Trust, the studio association of forty artists at Chisenhale Works, now organises project work in schools and community centres through the arts office of Tower Hamlets, as well as its own exhibitions. Interim Arts, based in Beck Road, Hackney, where thirty-six houses have been licensed to artists by Acme, have put on exhibitions quite outside gallery conventions – using the house, or the street outside – which intrigue and entertain the public by different means, but essentially in the same way as a lively exhibition in a gallery does. The Whitechapel itself held the Open exhibition



Catherine de Monchaux. **Unicorn** 1985





J. Miller. *Café (Cups of Tea)* 1985



Hilary Rosen. *Canapés* 1985

in five separate venues in the area in 1984, and two in 1985, while the programme of re-furbishing the Gallery was carried out. And its own programme of exhibitions in health and day-care centres, and the Artists in Schools programme are flourishing, bringing into contact groups which ten years ago would have been uneasy bedfellows.

The majority of these kinds of events are organised on a tiny budget, and though they benefit from the now well-established network of communications amongst art-related groups in the boroughs (especially in Tower Hamlets and Hackney), they rely above all on the self-help approach of artists themselves.

Despite the recession, the squeeze on art college teaching jobs and available grants, and the odds being greater than ever against artists making a living from their work, arts activity in East London is by no means diminishing. There is a long waiting-list for the studios made available to artists by Acme and SPACE, almost all of whose properties are in this area. It now has, as is widely known, a higher concentration of artists than any comparable region in Europe. In one sense, then, the exhibition has a greater role to play than ever before in providing an all-too-rare opportunity for these artists to exhibit their work to a wide public, and to see other work being made around them. Yet where the exhibition was once something of an isolated event, its role is now supported by many others, and the event takes place in the context of one of the most dynamic and varied cultures in the country.

Rachel Kirby  
Exhibition Coordinator

Dimensions are given in inches,  
height x width (x depth if three-  
dimensional)

Cheryl A. Aaron

**Fairgrounds** 1985

Etching/Aquatint, 23½ x 29½

Price: £85

Peter Abrahams (b. 1958)

**Autobiography** 1985

Gouache on paper, 22 x 30

Price: £180

Flick Allen (b. 1952)

**A Postcard From Durham** 1985

Acrylic, rags, feathers on cotton duck,  
60 x 108

Price: £800

May Anderson (b. 1956)

**Suffolk Churchyard** 1985

Charcoal, 11½ x 16

Price: £125

Miranda Argyle (b. 1952)

**Hammock** 1985

Watercolour, 24 x 36

Price: £350

Saleem Arif (b. 1949)

**Sanctuary of Splendour** 1985

Acrylic on paper with muslin backing,  
78 x 100

Price: £500

Conrad Atkinson (b. 1940)

**Financial Times** 1985

Acrylic on canvas, 65 x 48

Price: £5,000

Eric Bainbridge (b. 1955)

**The Ascension of Jimmy the Nail** 1985

Wire, crystalac, fur fabric, 80 x 40 x 90

Price: £5,000

Martyn Baker (b. 1953)

**Popping Out** 1985

Watercolour, 16 x 19½

Price: £70

John Bangs (b. 1949)

**And Over My Garden Fence** 1985

Pastel, 24 x 30

Price: £60

Maureen Black (b. 1926)

**The Boating Pond, Greenwich Park** 1985

Etching and aquatint, 12 x 24

Price: £46

Vivien Blackett (b. 1955)

**Tent, Tree, Evening** 1985

Oil on canvas, 48 x 60

Price: £500

Dennis Blowes (b. 1950)

**The Balcony** 1985

Etching, 17½ x 24

Price: £45

Allan Boston (b. 1951)

**Yellow Car and Window** 1985

Oil on canvas, 48 x 72

Price: £1,000

Derek Bradford (b. 1955)

**Safety Caress** 1985

Oil pastel on paper, 27 x 24

Price: £77

Caroline Broadhead (b. 1950)

**Twinshirt** 1985

Silk fabric, 144 x 36

Price: £490

Janet Brooke (b. 1947)

**Benny's** 1985

Linocut, 20 x 26

Price: £40

Carolyn Brooker (b. 1958)

**Aldine's Dream: Seafaring Tales No. 1**

1985

Photograph, 13½ x 16½

Price: £30

**Aldine's Dream: Seafaring Tales No. 2**

1985

Photograph, 16½ x 13½

Price: £30

Alastair Brotchie (b. 1952)

**Bones of the Earth, Skin of Water** 1984

Collaged maps, 27 x 21½

Not for sale

Gillian Calvert (b. 1953)

**Roofer II** 1985

Oil on canvas, 36 x 48

Price: £300

Brian Chalkley (b. 1948)

**Farringdon Station** 1985

Oil on canvas, 93 x 116

Price: £1,250

Alec Chanda (b. 1962)

**Australian Landscape 'A Creek at Manar'**

1985

Gouache, 8¼ x 10½

Price: £200

Maria Chevska (b. 1948)

**In the Raven** 1985

Oil on canvas, 64 x 80

Price: £2,500

Jocelyn Clarke (b. 1958)

**The Oratory** 1985

Oil on canvas, 41 x 33

Price: £300

Sinéid Codd

**In My Room** 1985

Gouache, watercolour, wax, pencil,

19 x 13

Price: £180

John Copnall (b. 1928)

**Autumnal Blues** 1985

Acrylic, 42¼ x 42¼

Price: £450

Mary Cossey (b. 1932)

**Head of Girl** 1985

Oil on canvas, 11 x 10½

Price: £65

Judith Cowan (b. 1954)

**Eagles Passing** 1984

White ciment fondu, 39½ x 58¼

Price: £2,000

Mikey Cuddihy (b. 1952)

**A Bed of Roses (April)** 1985

Charcoal on paper, 98 x 142

Price: £600

Paul Dash (b. 1946)

**Citrus Fruit** 1985

Watercolour, 7 x 8

Price: £70

Kate Davis (b. 1960)

**(His Return)** 1985

Colour photograph, 36 x 26

Price: £300

Jeffrey Dellow (b. 1949)

**Terebinth** 1985

Acrylic on canvas, 68 x 78

Price: £650

Jeffrey Dennis (b. 1958)

**The Confinement of Richard Dadd** 1985

Oil on canvas, 38½ x 36

Price: £1,000

Susan Egan (b. 1956)

**Untitled No. 4** 1985

Wax, paper, 15 x 12

Price: £200

Charles Farina (b. 1958)

**Spires and Eagles** 1984

Graphite, charcoal, oil pastel, 21 x 30

Price: £125

Doreen Fletcher (b. 1952)

**Paddington Station at Dusk** 1984

Pencil on paper, 26 x 21

Price: £110

Denzil Forrester (b. 1956)

**Domino Hunters** 1985

Oil on canvas, 84 x 144

Price: £1,900

Noel Forster (b. 1932)

**Untitled** 1985

Acrylics on wood, 23½ x 45½

Price: £3,800

Nick Fredman (b. 1955)

**Lean Tide and Lizard** 1985

Acrylic on paper, 15¾ x 24

Price: £500

John Fuller (b. 1954)

**Acrobat and Dog** 1985

Wood, 90 x 42 x 32

Price: £2,520

Janet Goodkin (b. 1951)

**Violet Seller** 1985

Mixed media print, 23 x 19

Price: £47

Neil John Gordon (b. 1959)

**Self-Portrait (Evening)** 1984

Oil on card, 15½ x 14½

Price: £150

Antony Gormley (b. 1950)

**Refuge** 1985

Lead, fibreglass and air,

60 x 18 diameter

Price: £6,000

Adam Gray (b. 1963)

**Mothers Pride** 1985

Oil on canvas, 108 x 66

Price: £900

Sarah Greengrass (b. 1951)

**Island in the Dordogne** 1985

Acrylic/oil paint on canvas, 84 x 108

Price: £850

David Hardcastle (b. 1954)

**King and Queen** 1985

Ink and crayon on paper, 33 x 36¼

Price: £85



Tony Hayward (b. 1954)  
**Bouquet** 1985  
Mixed media, 15½ x 11 x 10  
Price: £850

Andrew Heard (b. 1958)  
**Heaven's not my Home** 1985  
Acrylic, 61¼ x 122½  
Price: £1,000

**Nothing** 1985  
Acrylic, 61¼ x 108  
Not for sale

Ron Henocq (b. 1950)  
**Pass Only** 1985  
Lino print, 28 x 36  
Price: £50

Susanna Heron  
**Artpiece: From 1-4** 1983-85  
Bronze and marble, 6½ x 26 x 12  
Price: £950

Polly Hope  
**Prague Spring** 1985  
Gouache and crayon, 27½ x 35½  
Price: £1,000

Jefford Horrigan (b. 1955)  
**Hold** 1985  
Clay and fabric, 36 x 45 x 45  
Price: £900

Edward Hurdling (b. 1918)  
**Winter Sunrise on A19 Stockton** 1985  
Oils, 17 x 13½  
Price: £30

Timothy Hyman (b. 1946)  
**Artists Assembling on the South Bank**  
(Leonard McComb, Jeffery Camp,  
Francis West, Neil Jeffries etc) 1984-85  
Oil on canvas, 36 x 72  
Price: £1,100

Albert Irvin (b. 1922)  
**Calabria** 1984  
Acrylic on canvas, 84 x 120  
Price: £3,500

Paul Jackson (b. 1954)  
**Approach** 1984-85  
Oil on board, 8 x 6  
Price: £250

Glenys Johnson (b. 1952)  
**Not yet titled** 1983  
Oil stick, pigment and chinagraph on  
calico, 82 x 25½  
Price: £1,650

Dan Jones (b. 1940)  
**Women's Cooperative Gala,**  
**Tehuantepec, Mexico** 1972-85  
Acrylic, 96 x 48  
Price: £800

Panayiotis Kalorkoti (b. 1957)  
**Untitled** 1984  
Multi-plate etching, 22½ x 26½  
Price: £100

John Keane (b. 1954)  
**Phantom Thrust** 1985  
PVA/plastic model/canvas, 14 x 14  
Price: £225

Peter Kennard (b. 1949)  
**For Earth** 1984-85  
Photomontage, 48½ x 52½  
Price: £1,200



Ingrid Kerma (b. 1942)  
**Wood and Rocks and Stone (A)** 1985

Oil on canvas, 67 x 47

Price: £1,200

Rob Kessler (b. 1951)  
**Spiraea Fawn, a Seasonal** 1985

Wood, leather, dried leaves, 18 x 5 x 12

Price: £400

Roger Kite (b. 1947)  
**Dreamer** 1985

Pencil, pastel and wax on paper,  
22¾ x 30¾

Price: £250

Sharon Kivland (b. 1955)  
**Blue for a Boy** 1985

Two unique colour photographs,  
each 50 x 50

Price: £800

**Pink for a Girl** 1985

Two unique colour photographs,  
each 50 x 50

Price: £800

Robert Koenig (b. 1951)  
**Committee** 1985

Beech, carved, 24 x 45 x 1¾

Price: £500

David Leapman (b. 1959)  
**Treasure Hunting No. 3** 1985

Acrylic on canvas, 44 x 60

Price: £700

**Christian Scaling the Hill Difficulty** 1985

Acrylic on canvas, 65 x 83

Price: £800

Ben Levene (b. 1938)  
**Masons Ironstone Still Life** 1985

Oil on canvas, 36 x 30

Price: £1,250

Jane Lewis (b. 1953)  
**Black Girl** 1984

Etching, 10 x 10

Price: £50

Eva Lockey (b. 1952)  
**For Geoff Rigden** 1985

Oil on wood, 15 x 12

Price: £250

Janet Ludlow (b. 1950)  
**Caught Between the Longing of Love  
and the Struggle of Legal Tender** 1985

Mixed media on paper, 42 x 34

Price: £250

Jock McFadyen (b. 1950)  
**Tomm is King** 1985

Oil on canvas, 60 x 48

Price: £1,400

Martin McGinn (b. 1955)  
**Nommo** 1985

Oil on canvas, 70 x 58

Price: £500

Robert McPartland (b. 1953)  
**Head** 1985

Oil pastel on paper, 42 x 32¼

Price: £800

**Group** 1985

Charcoal on paper, 22 x 29¼

Price: £250

Agalis Manessi (b. 1952)

**Lemons and Pears Jug** 1985

Ceramic (tin glazed earthenware),

11 x 6 x 9

Price: £74

**Dish with Blue Jug** 1985

Ceramic (tin glazed earthenware),

1½ x 14 x 14

Price: £58

Derek Marks (b. 1960)

**No Longer a Game** 1985

Oil, 72 x 60

Price: £800

Catherine de Monchaux (b. 1960)

**Unicorn** 1985

Mixed media, 66 x 28 x 92

Price: £1,950

Paul de Monchaux (b. 1934)

**Guest** 1985

Monks park stone, 12½ x 13½ x 39½

Price: £3,340

J. Miller (b. 1912)

**Café (Cups of Tea)** 1985

Acrylic on board, 23 x 19

Price: £10

Lucile Montague (b. 1950)

**Ambidextrous** 1985

Pastel on paper, 44 x 39

Price: £360

Felicity Montagu (b. 1944)

**View From Wern Sebon,**

**Llanrhaeadr Ym Mochnant** 1985

Conté and pastel on paper, 25½ x 32½

Price: £250

Mali Morris (b. 1945)

**Lara Day** 1984/85

Acrylic on canvas, 23 x 35½

Price: £600

Keiko Nakamura (b. 1948)

**Caterpillar Crosses the Bridge** 1985

Ceramic, 14 x 7 x 8

Price: £85

Susan Nemeth (b. 1957)

**Vase with Faces** 1985

Porcelain with body stains,

14½ x 7½ x 6½

Price: £115

**Bowl with Figure** 1985

Porcelain with body stains,

3½ x 9 diameter

Price: £65

Alison Neville (b. 1945)

**Westminster Cathedral** 1985

Etching/Aquatint, 36 x 25

Price: £110

Simon Nicholas (b. 1954)

**Male Figure** 1985

Charcoal on paper, 29¼ x 36

Price: £140

**Female Figure** 1985

Charcoal on paper, 29¼ x 36

Price: £140

Guy Noble (b. 1959)

**The Intruder** 1985

Oil on canvas, 40 x 50

Price: £4,000

Humphrey Ocean (b. 1951)

**Country Miles** 1984

Acrylic, 80 x 20

Price: £1,800

Hughie O'Donoghue (b. 1953)

**Sleeper** 1985

Oil on canvas, 124x98

Not for sale

Ken Oliver (b. 1948)

**Still Life—Azores** 1985

Acrylic, wax, collage, 43x30

Price: £400

Fabrizio Panattoni (b. 1954)

**7.00am (from the series Sequences**

**7 am-8 pm)** 1985

Photograph, 20x16

Price: £150

Shanti Panchal (b. 1951)

**Saffron Robe** 1985

Watercolour, 70x58

Price: £2,750

Peri Parkes (b. 1952)

**Autumn/Bow** 1985

Oil on canvas, 24x30

Price: £500

**Winter/Bow** 1985

Oil on canvas, 24x30

Price: £500

Vicken Parsons (b. 1957)

**Untitled (House)** 1985

Oil on canvas, 10x14

Price: £500

**Untitled (Cloud)** 1985

Oil on canvas, 12x14

Price: £500

Gregory Wish Pavely (b. 1957)

**'Skeggy Funfair,' Skegness** 1985

Photograph, 24x36

Price: £200

George Percy (b. 1935)

**Study, after Nolde** 1984

Oil on paper, 27x37

Price: £150

Jonathan Pike (b. 1949)

**Allotments, Forest Hill** 1985

Watercolour/gouache, 21x28

Price: £490

Fred Pollock (b. 1937)

**Two Blues** 1985

Acrylic on canvas, 24x36

Price: £600

Robert Pugh (b. 1950)

**Shirley Pregnant** 1985

Oil on canvas, 24x30

Not for sale

Graham Read (b. 1940)

**Tableau With Philosopher** 1985

Pastel on paper, 42x48

Price: £500

David Redfern (b. 1947)

**Plan for Coal** 1985

Oil on canvas, 54x72

Price: £1,750

Tony Rickaby (b. 1944)

**Dialectical Landscape:**

**Moorlands Estate, SW9** 1985

Acrylic, 36x72

Price: £850

Peter Robinson (b. 1957)

**Ah Rah Rah** 1985

Crayon on paper, 23x20

Price: £175

Hilary Rosen (b. 1953)

**Canapés** 1985

Charcoal, 25 x 25

Price: £130

George Rowlett (b. 1941)

**Deal Pier from Walmer Beach,**

**Fishermen** 1985

Oil on canvas, 24 x 38

Price: £750

Veronica Ryan (b. 1956)

**Relics in the Pillow of Dreams** 1985

Plaster, colour, bronze, 10 x 36 x 36

Price: £900

Audrey Scovell (b. 1942)

**Winter Garden** 1985

Etching, 20 x 25

Price: £58

**Conservatory in Kingshall Road** 1985

Etching, 21 x 27

Price: £68

Don Smith (b. 1925)

**Flag (Kentucky Derby at**

**Churchill Downs)** 1985

Acrylic, 17 x 31

Price: £150

Pete Smithson (b. 1956)

**The Emperor's Clothes** 1985

Cardboard, glue, wax, oil paint, steel,  
wire, 81 x 54 x 23

Price: negotiable

Stephen Speller (b. 1961)

**Alison** 1985

Photograph, 20 x 16½

Price: £75

Anthony Spencer (b. 1929)

**Judgement of Paris I** 1985

Acrylic on board, 36 x 41

Not for sale

Jane Stobart (b. 1949)

**Whitechapel Bell Cases I** 1985

Aquatint and drypoint, 20 x 18½

Price: £40

Peter Symons (b. 1958)

**Covent Garden** 1985

Oil on canvas, 24 x 27

Price: £220

Min Tabor (b. 1920)

**The Restaurant** 1985

Oil on canvas, 14 x 18

Price: £650

David Stephen Tebbs (b. 1945)

**Against the Wall** 1985

Oil on canvas, 68 x 102

Price on application

Andy Thomson (b. 1952)

**From Hermes Trismegistus** 1985

Oil on canvas, 31 x 37

Price: £250

George Tobias (b. 1956)

**Dali Doll** 1985

Sculpture, 12 x 11 x 5

Not for sale

Paul Tonkin (b. 1951)

**Soft Blow** 1984

Acrylic on canvas, 71 x 49

Price: £1,000



Shafique Uddin (b. 1962)

**School Master** 1985

Watercolour, 25 x 20

Price: £50

Jim Unsworth (b. 1958)

**Ferry Bear** 1985

Gloss paint and mild steel, 51 x 40 x 15

Price: £1,350

Charlotte Verity (b. 1954)

**Seed Head** 1985

Oil on canvas, 44 x 58

Not for sale

Ian Walton (b. 1950)

**Rules** 1985

Mixed media on wood, 19 x 19

Price: £180

David Ward (b. 1951)

**Red Drawing** 1985

Light drawing on photographic paper,  
20 x 115

Price: £950

Peter Webster (b. 1951)

**Zone** 1984/85

Oil on canvas, 72 x 60

Price: £444

Dean Whatmuff (b. 1959)

**Pressed** 1985

Varnished wood, 20 x 30 x 7

Price: £200

**Flesh** 1985

Varnished wood, rusted steel,  
25 x 48 x 17

Price: £250

Caroline Wilkinson (b. 1951)

**Bed: Dream** 1985

4 photographs in two frames,  
each 16 x 13

Price: £80 each frame

**Bed: Forgetting** 1985

4 photographs in two frames,  
each 16 x 13

Price: £80 each frame

Gerry Williams (b. 1959)

**Autumn King** 1985

Wood, ceramic, wax, paint, 15 x 19 x 7

Price: £150

Verdi Yahooda (b. 1952)

**From '45 Northwald Road' series** 1985

Photograph, 20 x 16

Price: £120

## Invited Projects

These works represent some of the School's projects in which the Gallery has been involved over the past year.

Billy Bailey (b. 1968), pupil at Templars School, Stepney Green.  
Drawing with pencil and coloured ink, 19½ x 15

Prabhot Singh (b. 1969), pupil at Templars School, Stepney Green.  
Two drawings with pencil and coloured ink, each 30 x 22

Charlie Ford, Jacquir Hussain and Joseph Alcindar, pupils at Templars School, Stepney Green.

**Pool Players:** Group of three sculptures made during a two week sculpture project with Jefford Horrigan.

Tania Bavington (b. 1977), pupil at Wingfield Primary School  
**Rock and Roll Dress, and when she danced, her shoes fell off,** papier maché, wire and plaster; dress: 11 x 28 x 28, two shoes: 6 x 2 x 2.  
Made during a one term residency (funded by GLA) with Judith Cowan.

Sue Lovell (b. 1958), artist in residence at Thomas Buxton Infants School.  
**Two Constructions,** wood, plaster, wax, collage and found objects.

Children at Thomas Buxton Infants School.  
Group of screen prints made during Sue Lovell's residency.



May Anderson, **Suffolk Churchyard** 1985



Peter Kennard: *For Earth* 1984-85

## Around the Open

Since 1979 the Whitechapel has extended its education programme beyond the Gallery. Utilizing the eagerness of many East London artists to engage with the community in their work, the Whitechapel has developed ways of working with them to establish closer contact between artists and the public.

The Open exhibition not only offers a showcase for work arising from the Gallery's community education programme, but also provides an opportunity for gallery staff and people in the community to identify artists who might participate in future projects.

## *Artists in Schools*

In 1979 the sculptor Robert Russell became the first of the Whitechapel's Artists in Schools. Since his term at Woolmore Primary School in Poplar, more



than twenty-two East London schools and artists have participated in the scheme, which is funded by an ILEA sponsored Urban Aid Grant.

Artists are selected by the school, where a space is made available for the artist to continue his or her own work and also respond to the interests of staff and pupils.

One of the main aims of the scheme is to enable people to see art in the making, including the problems and mistakes, and to be aware of the decisions that are necessary in reaching the final form of the work. Artists also have much to gain from the contact with children, and for many the school environment has been influential in bringing about important changes in their work.

It is not only teachers and pupils who have contact with the artist; by arranging small exhibitions during the residency, or by the commissioning of a work to be placed permanently in the school, parents and friends can also become involved.

Recent projects have included Rob Kessler at Holy Trinity School, Dalston, Veronica Ryan at Templars School, Stepney, Sue Lovell at Thomas Buxton School, Spitalfields, Vivien Blackett at Mulberry School, Whitechapel and Terry O'Farrell at Berger School, Homerton.

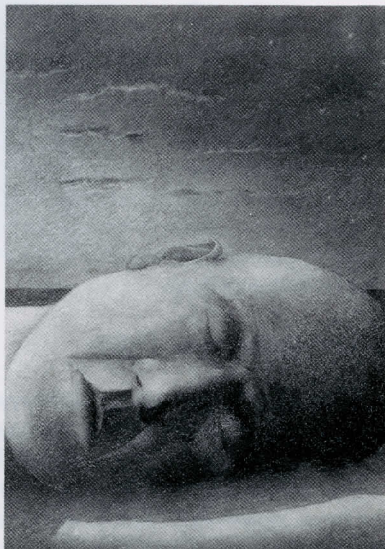


Agalis Manessi, Dish with Blue Jug 1985





Adam Gray, **Mothers Pride** 1985



Robert McPartland, **Head** 1985

### *Visits to Studios*

Developing from the idea of artists in schools, a large number of artists working in various media have opened their studios to school and other community groups. A visit to a studio provides a valuable insight into the kind of working environments different artists create for themselves.

Often a visit by a school has led to a long-term involvement with the artist. Albert Irvin, for example, went on to work with Amherst School children in their classroom. Other artists who have hosted group visits include Eric Bainbridge, Edward Allington, Fran Cottell, Anish Kapoor and David Ward.

### *Exhibitions in the Community*

During the Gallery's closure in 1984-85, a number of projects were initiated which sought to involve the local community more directly in looking at and making art and, at the same time, to draw attention to the work of the large number of artists who are based in East London.

These projects are now integral to the Gallery's programme as a whole. A

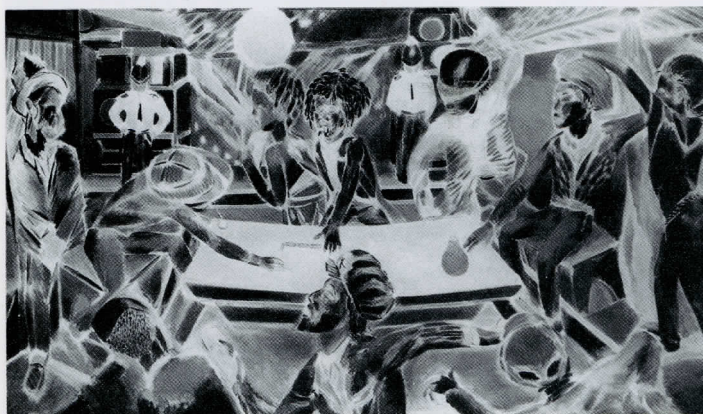
regular series of exhibitions are held at the Spitalfields Health Centre, Brick Lane. These are one- or two-person shows, or mixed thematic exhibitions of work by local artists. The programme is deliberately varied in order to present a range of ideas which challenge and inform. Health Centre staff have, at times, been invited to make the selection of works to be displayed. Exhibitions have included Doreen Fletcher's paintings of Limehouse, paintings by Solly Kaufman, a mixed exhibition on the theme of *Rooms* and Will Adams' paintings from his residency at St. Botolph's Crypt.

In collaboration with *SHAPE*, the organisation which helps make the arts accessible to disabled and disadvantaged people, an exhibition circuit of five venues has been established, involving St. Clement's Hospital, St. Botolph's Crypt, Shoreditch Day Centre, the Cable Street Project and Hackney Hospital. Thematic mixed shows have been toured to these venues with exhibiting artists participating in talks and workshops.

### *Artists Working in the Gallery*

With each changing exhibition at the Whitechapel, a programme of educational activities are offered to schools, colleges, community groups and the general public. Workshops, talks, seminars and lectures are led by artists who are able to communicate their enthusiasm for, or their particular knowledge of, the work on show. Saleem Arif, Maria Chevska, Jeffrey Dennis, Antony Gormley and Jefford Horrigan are among those East London artists who have worked in the Gallery recently.

Jenni Lomax  
Community Education Organiser



Denzil Forrester: *Domino Hunters* 1985



Miranda Argyle, **Hammock** 1985

## Education programme

Full details of the Gallery's education programme, and talks and lectures relating to the Open exhibition are given in the January/February newsbooklet. For further information contact the Community Education Office. 01-377 5015.

## Sales

Any visitors to the exhibition who are interested in buying works of art on view should contact Rachel Kirby in the Exhibitions Office. 01-377 5015.

## Acknowledgments

The Gallery would like to thank the staff of the Central Library of Tower Hamlets for allowing the selection of the exhibition to take place on their premises, and Geoff Onyett for his photography of the selected work.

The Whitechapel Art Gallery is a registered charity which receives revenue support from the Arts Council of Great Britain, Greater London Council, Inner London Education Authority, Greater London Arts, and the London Borough of Tower Hamlets. Its exhibitions and activities also receive financial assistance from companies (through sponsorship and donations), trusts and individuals.

### **Whitechapel Art Gallery**

Whitechapel High Street, London E1 7QX. 01-377 0107

Underground: Aldgate East

Opening Hours: Tuesday to Sunday 11 am-5 pm, Wednesday-8 pm. Closed Monday.

Admission free.

Designed by Peter Saville Associates. Printed by PPC Printing Limited.  
Published by the Trustees of the Whitechapel Art Gallery © 1986.