

1987

WHITECHAPEL

OPEN

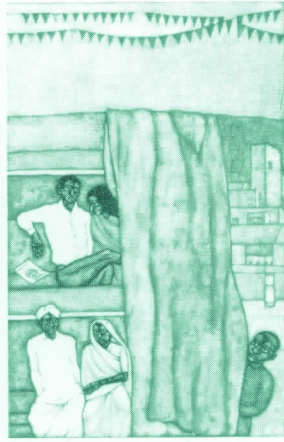
Lower, Upper and New Galleries: 20 March-26 April 1987

WHITECHAPEL

Catalogue



Katharine MacCarthy, *How She Stands* 1986



Shanti Panchal, *The Veil - South Bank* 1986

Introduction

1987 is the tenth anniversary of the **Whitechapel Open** exhibition. In ten years the show has established itself in the London, and even the national art calendar, as one of the more interesting platforms for younger artists and as a show with a catholic spread, embracing professional and amateur work. It has recently spawned similar exhibitions at the South London Art Gallery (South London Open, since 1986) and Riverside Studios (Riverside Open, since 1986). However, the Whitechapel Open, which now attracts entries from more than 1500 artists, remains the largest as well as the most far reaching in its range, particularly through the inclusion of projects undertaken by artists working in schools during the previous year.

The Open exhibition itself has a long pedigree. One of the original objects of the Gallery was to show 'Free exhibitions of the work of schoolchildren and students working in the area, and local residents,' though during the first decade of the Gallery's existence there were only occasional exhibitions for the first two groups, and none for working people. Canon Barnett's main aim had been to educate through high quality exhibitions of art, taking the view that local people would gain more through appreciation of the work of the greatest artists than from exhibiting their own.

In 1910, however, the **Society of Essex Artists** were allowed to show in the Upper Gallery while an exhibition was being dismantled downstairs. 19,000 people visited the exhibition, and local artists were quick to take advantage of the opening it provided, announcing a joint exhibition with the **Toynbee Art Club** the following year. At the opening of this, it was observed: 'The joy of the men who pursue art as a profession is always haunted by the thought that they are toiling for livelihood. . . . This club has no such fear. The members go to the woods, the fields and the river; and sketch in their own way whatever pleases them.' The Toynbee Art Club went on to organise an Exhibition of Pictures almost every year between 1912 and 1928.

The change from an exhibition of art club members to one open to all took place at the end of the 1920s. In 1928 and 1929 exhibitions were held by the newly formed **East London Art Club** which, though based at the Bow and Bromley Evening Institute, announced the intention of showing annually 'the best in East London Art'. Then in 1932 the Gallery itself took the initiative, organising the **First East End Academy** and inviting the participation of 'all Artists *living* or *working* East of the famous Aldgate Pump'. The exhibition was a great success and became an annual event from then on, showing 600 or more pictures, and a small number of sculptures, in all three galleries. The 1937-38 annual report quoted some extracts from press reviews of the exhibition:

'The gallery has made itself famous as The Working Men's Academy.'

'The most amazing exhibits were three 36-foot long pen and ink drawings on calico of Mystic Subjects. These were done by an elderly housewife in her spare time.' (Madge Gill)

'We are hearing a lot about art and the Academy these days, but how many of you know that in London there is an art gallery outside of which butchers and bakers leave their vans while they go in for a peep at the pictures?'

It is interesting to note that although the Academy was open to all ages, a separate exhibition catered for art students at this time, an annual competitive exhibition of the '**Students Sketch Clubs** attached to the Chief London Art Schools.' The Academy itself practised little or no selection, and was almost totally amateur well into the fifties.

The Academy quickly regained its momentum after the war: In 1950, though, a complaint about the number of 'views of Devon and North Wales' gave a hint that times were changing faster than the exhibition. An experiment in 1952 to hang only a selection of the submissions proved very unpopular and was dropped the following year. However, change could not be kept at bay. There was increasing comment in the press about the need to raise standards, as well as about the influence on amateur painters of such exhibitions as Mondrian (1955) and Jackson Pollock (1958). In 1963 the exhibition was dropped altogether.

When it started again, in 1969-70, it was as the **East London Open**, was held in the Upper Gallery only, and was selected by a jury. In a Whitechapel report of 1971, a comment to the effect that many visitors, 'not knowing about this particular Whitechapel tradition, were puzzled by it' indicates how much the Gallery's regular audience had changed in the meantime. Some attempts were made in the early seventies to revive the exhibition, and to attract the many full time artists moving into warehouse studios in the area, but the number of submissions declined: to 222 in 1976.

In 1977 the exhibition was renamed the **Whitechapel Open**, the catchment area extended, and a campaign mounted to persuade professional artists to participate, whilst encouraging amateurs to continue doing so. Much press and public comment ensued, and the exhibition regained its traditional broad base. It has grown steadily since: 800 artists entered in 1980, over 1000 in 1983, and this year just over 1500. The Gallery's education programme has developed simultaneously, and work arising from it has become an integral part of the annual exhibition.

This year the exhibition has been selected by Nicholas Serota and Jenni Lomax.

Nicholas Serota/Rachel Kirby

Catalogue of Exhibition: *Lower & Upper Galleries & Audio Visual Room*

MINEO AAYAMAGUCHI (b. 1953)

Beyond Colour 1986

VHS video, 14 mins

Price: £45

WILL ADAMS (b. 1951)

John 1983

Charcoal on paper, 69 x 65

Not for sale

John in the Studio 1983-86

Oil on canvas, 66 x 33.5

Price: £300

FLICK ALLEN (b. 1952)

Anecdotal Landscape no. 3 (V Woolf) 1986

Pastel and oil on paper, 120 x 120

Not for sale

TIM ALLEN (b. 1950)

Memory, Submersion and Lights 1986

Oil on canvas, 240 x 180

Price: £2,000

SUSAN ANDREWS (b. 1958)

Enid's Room 1986

Black and white photograph, 51 x 41

Price: £40

SALEEM ARIF (b. 1949)

Harbour of Intimacy 1986

Acrylic and sand on paper and muslin,
153 x 250

Lent by Ipswich Museums and Galleries

ERIC BAINBRIDGE (b. 1955)

**The Hole Through Which All Things
Must Pass (Fond)** 1987

Dunlopream foam loaf, 236 x 167.5 x 114

Price negotiable

NICOLA BALDWIN (b. 1961)

Falling Under 1987

Black and white U-Matic video, 14 mins

Price: please contact artist

JOHN BANGS (b. 1949)

Outside the Café de la Criée 1986

Pastel on paper, 77.5 x 58

Price: £175

MAUREEN BLACK (b. 1926)

Women at Greenham 1986

Etching (edition of 40), 43 x 59

Price: £46 (unframed £30)

VIVIEN BLACKETT (b. 1955)

Two Towers 1986

Oil on canvas, 213 x 173

Price: £1,700

ALLAN BOSTON (b. 1951)

Car and Orange Patch 1986

Oil on canvas, 122 x 183

Price: £1,000

FRANK BOWLING (b. 1936)

Gate 1986

Acrylic on canvas, 165 x 160

Price: £4,400

CAROLYN BROOKER (b. 1958)

Cracked Madonna 1986

Photograph, 102 x 71

Price: £100 (unframed £50)

ZOË CALLAGHAN (b. 1954)

Still Life 1986

Oil and charcoal on paper, 73 x 62

Price: £200

RENGANADEN CALINGHEN (b. 1956)

My Brother 1986

Oil on canvas, 60 x 50

Price: £400

GILLIAN CALVERT (b. 1953)

The Bench: Drink/Lovers 1986

Oil on canvas, 186 x 186

Price: £1,000

ANDREW CARNIE (b. 1957)

Vantage 1985

Oil and wood on canvas, 53.5 x 40.5 x 26

Price: £350

TONY CARTER (b. 1943)

Crook – On Wishing the Miracle of Unspilled Blood 1985–86

Mixed media, including photographic reproductions, wine and .303 bullet, approx. 225 x 275

Price: £3,300

BRIAN CHALKLEY (b. 1948)

Stratford Night Landscape 1986

Oil on canvas, 236 x 298

Price: £1,500

JUDY CHAMBERLAIN (b. 1959)

Winter Self Portrait 1985–86

Oil on canvas, 60 x 50

Price: £195

JOHN CHAPLE (b. 1959)

The Gates 1986

Gouache on paper, 70 x 75

Price: £350

RICHARD CHAPMAN (b. 1951)

Drawn 1985

Graphite on paper, 75 x 57

Price: £300

MARTIN CHESTERMAN (b. 1958)

Thomas Hollywood House 1986

Ceramic vase, 24 x 21.5 x 18.5

Price: £95

MARIA CHEVSKA (b. 1948)

Huddle 1986

Oil on canvas, 107 x 150

Price: £850

JOANNA CIECHANOWSKA (b. 1951)

Open for Business 1986

Pastel and acrylic on paper, 67 x 85

Not for sale

JOCELYN CLARKE (b. 1958)

Conversation 1986

Oil on canvas, 201 x 152

Price: £650

PATRICK COBBING (b. 1952)

Chinese Pots 1987

Mixed media on canvas, 72 x 61

Price negotiable

SINÉID CODD (b. 1958)

The Marriage 1987

Mixed media on paper, 74 x 71

Price: £180

FRANCES COLEMAN (b. 1952)

Otonó 1986

Acrylic and charcoal on paper, 60 x 60

Price: £125

KEN CONNOR (b. 1953)

Leaving Dublin 1987

Oil on canvas, 80 x 105

Price: £300

TONY COOMBS (b. 1945)

City Road Lock, Islington 1985
Charcoal, conte and chalk on paper:
78 x 100
Price: £200

DAVID COOPER (b. 1952)

Marion 1983
Oil on canvas, 76 x 90
Not for sale

EILEEN COOPER (b. 1953)

Man Overboard 1986
Oil on canvas, 226 x 168
Price: £3,000

JOHN COPNALL (b. 1928)

Big Green Diamond I 1986
Acrylic on canvas, 115 x 115
Price: £550

FRAN COTTELL (b. 1954)

Containment 1986
Acrylic on paper, between perspex,
188 x 155 x 9
Price: £400

JUDITH COWAN (b. 1954)

A Sudden Gust 1986
Gum acacia pulp and sand, 70 x 110 x 140
Price: £2,000

STEPHEN DARRAGH (b. 1963)

Man with a Knife 1986
Oil on canvas, 49.5 x 49.5
Price: £150

JEFFREY DELLOW (b. 1949)

Raft of Delights 1986-87
Acrylic on canvas, 163 x 232
Price: £1,500

ARTURO DI STEFANO (b. 1955)

Sudarium: Bertolt Brecht 1986
Oil on jute, 96 x 96
Price: £700

JEAN-PATRICK ELMES (b. 1954)

Can Paradise be Found at the Shopping Centre 1986
Etching (edition of 20), 53.5 x 41
Price: £90 (unframed £70)

JILL FANSHAWE KATO

Jöheki 1986
Stoneware, 40 x 42 x 6
Price: £190

Skyscape 1987
Stoneware: 34 x 54 x 8
Price: £190

MICHAEL FENTON (b. 1959)

Still Life 1986
Charcoal on paper, 70 x 70
Price: £250

DOREEN FLETCHER (b. 1952)

Train through Mile End Park 1987
Oil on canvas, 78 x 104
Price: £385

DANIEL GIBSON (b. 1958)

Tree Figure 1987
Acrylic on paper, 103 x 77
Price: £300

PAUL GILDEA (b. 1956)

Three Sticks 1986
Oil on canvas, 120 x 74
Price: £1,500

TRICIA GILLMAN (b. 1951)

Chalice 1985

Oil on canvas, 30 x 41

Price: £300

ANGELA GLADWELL (b. 1945)

Isle of Wight Stones 1986

Gouache on paper, 56.5 x 76

Price: £400

MEL GORDON (b. 1943)

The Supporter 1986

Acrylic, collage, oil and enamel on canvas, 185 x 123

Price: £900

PAUL GRAHAM (b. 1956)

Waiting Room, Southwark DHSS, London 1984

Photograph, 127 x 101

Price: £400 (unframed £350)

Waiting Room, Poplar DHSS, East London 1985

Photograph, 127 x 101

Price: £400 (unframed £350)

ADAM GRAY (b. 1963)

Conga 1986

Oil on canvas, 210 x 152

Price negotiable

LOUELLA GWILLIM (b. 1950)

Snow in Peckham 1987

Oil on board, 24 x 20

Price: £100

SHARON HALL (b. 1954)

Toussaint's Guerillas Harry the French Troops 1986

Oil on linen, 150 x 150

Price: £800

DAVID HARDCASTLE (b. 1954)

His Lover's Eye 1986

Pastel on paper, 150 x 90

Price: £395

ANDREW HEARD (b. 1958)

Blow-Up 1986

Acrylic on canvas, 150 x 200

Price: £800

SUSANNA HERON (b. 1949)

Plumb Line 1986

Copper, steel line and marble, 217 x 86 x 10

Price: £1,000

JOHN HEWITT (b. 1955)

Wishful Thinking 1986

Etching (edition of 15), 81 x 82

Price: £180 (unframed £150)

CLIVE HODGSON (b. 1953)

Basso Asso Masso 1986

Oil on board, 45 x 50

Price: £2,000

JEFFORD HORRIGAN (b. 1955)

Only 1986-87

Clay, fabric, masonry and newspaper, 422 x 270 x 38

Price: £600

SOPHIE HORTON (b. 1957)

Circumbendibus – A Roundabout Way of Saying Something 1986

Mixed media including papier mâché, paint and charcoal, 75 x ø245

Price: £350

RACHEL HOWARD (b. 1960)

Amanda 1987

Photograph, 40 x 50

Price: £50

MARTIN HUGHES (b. 1963)

Strike! 1987

Acrylic on canvas, 228 x 167

Price: £1,000

ALEXIS HUNTER (b. 1948)

The Land Dreaming of the Sea 1986-87

Oil on canvas, 159 x 176

Price: £2,800

JOANNA HYSLOP (b. 1956)

Looking Down 1986

Oil on canvas, 183 x 320

Price: £1,320

JEFF INSTONE (b. 1941)

Preparatory work (¼ size) for 'The Significance of the Vacant Lot'

Oil on wood, 244 x 122

Not for sale

ALBERT IRVIN (b. 1922)

Elva 1987

Acrylic on canvas, 214 x 305

Price: £3,500

MAGNUS IRVIN (b. 1952)

We Can't Help It 1987

Woodcut (edition of 60), 130 x 105

Price: £200 (unframed £160)

PAUL JACKSON (b. 1954)

Presentiment 1986

Oil on board, 45 x 37

Price: £300

Cassandra 1986

Oil on board, 45 x 37

Price: £300

LUCY JONES (b. 1955)

Waterloo Summer 1986

Oil on canvas, 175 x 214

Price: £1,600 excl. frame

TAM JOSEPH (b. 1947)

The Crime Rate is Rising 1986

Acrylic on canvas, 120 x 180

Price: £1,500

The Good Shepherd and the Black Bird 1986

Acrylic on canvas, 300 x 180.

Price: £2,300

JOHN KEANE (b. 1954)

Landscape 1986

Oil and mixed media on canvas, 153 x 122

Price: £1,650

PETER KENNARD (b. 1949)

Incubus 1986

Photomontage on board, 107 x 183

Price: £400

INGRID KERMA (b. 1942)

I removed from the Sky the Blue that is Black 1986-87

Encaustic on canvas, 175 x 145

Price: £1,600

MICHAEL KERR (b. 1955)

Options on the Future 1986-87
Aluminium cast, resin, fibreglass and plastic, 125 x 125 x 28
Price: £800

ROB KESSELER (b. 1951)

Fall – An Object in Pursuit of its Image 1987
Mixed media, 200 x 90 x 90
Price: £500

JOAN KEY (b. 1948)

The Bad Mother 1986
Oil on canvas, 168 x 244
Price: £1,000

SHARON KIVLAND (b. 1955)

Hand to Mouth 1986-87
Two unique c-type photographs, each 127 x 127
Price: £750 each

ELAINE KOWALSKY (b. 1948)

That Excited Feeling 1987
Linocut, 68 x 51
Price: £160 (unframed £130)

JOHN LANGLEY (b. 1957)

Anita 1986
Black and white photograph, 33 x 24
Price: £45

DEBORAH LAW (b. 1953)

Carry Greenham Home, or For My Grandmother 1986
Oil on canvas, 220 x 220
Price: £1,500

BEN LEVENE (b. 1938)

Rory's Plate 1986
Oil on board, 142 x 113
Price: £5,000

JANE LEWIS (b. 1953)

Bartolo 1985
Etching (edition of 20), 55 x 65
Price: £80 (unframed £70)

Target 1987
Etching (edition of 25), 39 x 29
Price: £45 (unframed £37)

VINCENT LLOYD (b. 1960)

Venus and Mercury 1987
Acrylic on canvas, 101.5 x 139.5
Price: £750

EVA LOCKEY (b. 1952)

Fugit Amor 1986
Oil on wood, 38 x 38.5
Price: £350

SUSAN LOVELL (b. 1956)

Right Eye 1986
Mixed media on wood, 36 x 72
Price: £385

KATHARINE MacCARTHY (b. 1957)

How She Stands 1987
Carved hardwoods, 150 x 45 x 50
Price: £950

JOCK McFADYEN (b. 1950)

Rainy Day Women 1986
Oil on canvas, 213 x 262
Price: £4,500

AGALIS MANESSI (b. 1952)

Vase with Talking Women 1986
Tin-glazed earthenware, 28 x ϕ 23
Price: £75

Dish with Grey Vase 1987
Tin-glazed earthenware, 6 x 30.5 x 36
Price: £65

NIGEL MAUDSLEY (b. 1953)

Abandoned Books 1986
Photograph (edition of 15), 51 x 41
Price: £50 (unframed £35)

BRIDGET MEADOWS (b. 1953)

Sizewell Spoils a Beautiful Day 1986
Oil on canvas, 124 x 239
Not for sale

ALAIN MILLER (b. 1961)

Monologue 1987
Oil on canvas, 200 x 300
Price: £1,750

CATHERINE DE MONCHAUX (b. 1960)

Bathers 1987
Mixed media, 200 x 85 x 85
Price: £850

PAUL DE MONCHAUX (b. 1934)

Arc 1987
Swaledale fossil stone, 29 x 90 x 210
Price: £3,500

LUCILE MONTAGUE (b. 1950)

High Tea 1986
Pastel on paper, 125 x 80
Price: £350

SUSAN NEMETH (b. 1957)

White Porcelain Vase with Faces 1986
Porcelain with body stains, 42 x ϕ 19
Price: £145

Porcelain Bowl with Face 1986
Porcelain with body stains, ϕ 24
Price: £80

ALISON NEVILLE (b. 1945)

Derricks and Cranes 1986
Etching, aquatint and watercolour
(edition of 20), 93 x 63
Price: £130 (unframed £100)

COLIN NICHOLAS (b. 1949)

Plastic Culture 4 1985
Bronze, 45 x 8 x 9
Price: £950

JANE NORBURY (b. 1958)

Love Me Do 1987
Clay and slips, 96 x 60 x 30
Price: £180

PAUL NORTON (b. 1946)

You Tell Me 1986
Mixed media on paper, 65 x 86
Price: £300

DAVID OATES (b. 1954)

Unknown-Untitled 1986
Charcoal on paper, 138 x 106
Price: £250

HUMPHREY OCEAN (b. 1951)

Chester Himes 1987
Oil on canvas, 53 x 57.8
Price: £950

SHEILA OGILVIE (b. 1952)

Man in Grey 1987

Oil on board, 69 x 58

Price: £40

ROBERT OLINS (b. 1956)

Abbey 1986

Wood, aluminium and bronze,

150 x 275 x 90

Price: £550

KEN OLIVER (b. 1948)

View from the Music Room 1987

Acrylic and wax on card, 34 x 27

Price: £160

ROSAMUND OLIVER (b. 1953)

Spanish 1986

Pastel on paper, 41 x 56

Not for sale

JANE OSTLER (b. 1958)

Idle Promise 1986

Oil on canvas, 41 x 50.5

Price: £75

SHANTI PANCHAL (b. 1951)

Garlands and Rituals, 1986

Watercolour on paper, 80 x 102

Price: £1,250

The Veil – South Bank 1986

Watercolour on paper, 90 x 65

Price: £750

PERI PARKES (b. 1952)

View of the City from Bethnal Green

1986

Pencil on paper, 41 x 94

Not for sale

VICKEN PARSONS (b. 1957)

Untitled 1986

Oil on canvas, 30 x 38

Price: £1,200

JULIAN PERRY (b. 1960)

From My Studio Window 1986

Oil on board, 32 x 37

Not for sale

ROSEMARY PHELPS (b. 1943)

Number Ten III 1986

Oil on linen, 26 x 41

Price: £300

MARTYN PICK (b. 1963)

Spectres 1986

U-Matic video, 3 mins 15 secs

Not for sale

JONATHAN PIKE (b. 1949)

Elevation 1986

Watercolour on paper, 147 x 86

Price: £1,500

JOHN PLOWMAN (b. 1953)

What Price Luxury? 1987

Corrugated iron, vacuum cleaner, paper

and paint, 180 x 200

Price: £600

FRED POLLOCK (b. 1937)

Saffron Light 1985

Acrylic on cotton duck, 171 x 235

Price: £2,000

PETER PROUT (b. 1957)

A Portrait of William Donars 1986

Charcoal on paper, 72 x 57

Price: £200

DAVID REDFERN (b. 1947)

We Refuse 1986

Oil on flax, 206.5 x 206.5

Price: £1,000

GRAHAM REVELL (b. 1958)

Untitled 1987

Photograph (edition of 10), 69 x 60

Price: £125 (unframed £95)

LIZ RIDEAL (b. 1954)

**The Compleat Drawing Master:
Laughter** 1986

Laminated photobooth photographs,
105 x 82.5

Price: £500

**The Compleat Drawing Master:
Sadness** 1986

Laminated photobooth photographs,
105 x 82.5

Price: £500

JULIE ROBERTS (b. 1963)

The Workers 1986

Charcoal on paper, 80 x 100

Price: £200

HILARY ROSEN (b. 1953)

Ferry 1986

Watercolour on paper, 92 x 72

Price: £300

AMRIT ROW (b. 1957)

Now and Then 1986

Conte on paper, 127 x 95.5

Price: £200

VERONICA RYAN (b. 1956)

Reflecting Internal Space 1986

Bronze and plaster, 36 x 61 x 38

Price: £2,000

SUSAN SANDS (b. 1935)

Two Nudes – Blue and Brown 1985

Woodcut on Japanese paper

(edition of 6), 58 x 66

Price: £70 (unframed £45)

FITZROY SANG (b. 1955)

Home at Last 1986

Mixed media on card, 42.5 x 52

Price: £250

No Place Like Home 1986

Mixed media on card, 42.5 x 52

Price: £250

DON SMITH (b. 1925)

Jaw Jaw is better than War War 1984

Acrylic on canvas mounted on board,

34.5 x 45.5

Price: £75

JOHN SMITH (b. 1952)

OM 1986

16mm film transferred to video, 4 mins

Not for sale

PETER SMITHSON (b. 1956)

Charioteer 1987

Cardboard, wax, oil paint, glue, steel

and tin, 240 x 180 x 135

Price: £900

WILLIAM STOK (b. 1946)

Untitled 1987

Egg tempera and chalk on paper and

wallpaper mounted on canvas, 97 x 100

Price: £1,000

GLENN SUJO (b. 1952)

Tempietto d'Amore I 1986

Pastel and charcoal on paper, 50 x 66

Price: £389

MAUD SULTER (b. 1960)

As Warriors 1987

Acrylic and paper on canvas, 2 parts,
each 150 x 115

Price: £1,500

TREVOR SUTTON (b. 1948)

No, But I Wish 1986

Oil on canvas, 46 x 41

Price: £300

PETER SYMONS (b. 1958)

The Rabbit Hunters 1986

Oil on canvas, 84 x 89

Price: £390

JIM UNSWORTH (b. 1958)

Sarah Jane 1986-87

Paint and mild steel, 274 x 99 x 36

Price: £2,850

DAVID WARD (b. 1951)

Charm, Beauty and Strangeness no. 10
1986

Acrylic and oil on linen, 180 x 150

Price: £1,200

JEREMY WELSH (b. 1954)

Reflecting 1986

U-Matic video, 30 mins

Price: £70 (U-Matic), £35 (VHS)

JANE WENTWORTH (b. 1946)

Hats 1987

Pastel on paper, 53 x 61

Price: £350

DEAN WHATMUFF (b. 1959)

Blaze Again 1987

Various treated woods, 200 x 100 x 90

Price: £500

ANTHONY WHISHAW (b. 1930)

Night Sea 1985-86

Acrylic on canvas, 168 x 457

Price: £8,000

PHILIP WHITE (b. 1943)

The Edge of the Green 1987

Oil on canvas, 115 x 216

Price: £800

PHIL WILDMAN (b. 1939)

Brick Lane 1986

Charcoal on paper, 50.5 x 40.5

Price: £55

MICHAEL WILES (b. 1950)

Head and Shoulders 1987

Charcoal and conte on paper, 65.5 x 59.5

Price: £90

GERARD WILLIAMS (b. 1959)

Far North 1986

Wood, plaster, plasterboard and paint,
76 x 70 x 10

Price: £400

JULIA WOOD (b. 1953)

White Shadow 1986

Plasticine on brick and stone,
47 x 190 x 190

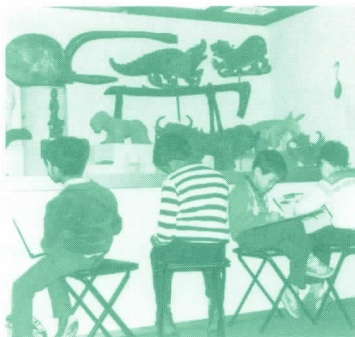
Price: £1,200

Dimensions are given in centimetres,
height x width (x depth).

Prices quoted include frame, but VAT
is payable on the 10% commission
levied by the Whitechapel.



Alan de Souza working at Daneford School



Stebon schoolchildren at the Museum of Mankind

Three Artists in East London Schools: *New Gallery*

The Whitechapel's Artists in Schools scheme has now been in operation for eight years, funded by an ILEA sponsored Urban Aid Grant, and additional grants from Sir John Cass's Foundation and the Aldgate and Allhallows Exhibition Foundation. During this time it has arranged the placements of twenty-two artists in schools throughout East London for one or more terms. The scheme was set up with the aim of introducing local schools to the large and varied community of artists who live or work in East London, and at the same time to create an awareness of the creative and technical processes involved in making art. As it progressed, schools realised the potential of a resident artist to influence and enrich the whole curriculum, and to open up links with the wider community through the involvement of parents.

The artists are selected by the schools themselves, initially from slides and studio visits, then by interview. The form of the residency is determined by the work of the artist and the nature of the school. Each one represents a challenge to artist and children alike, requiring commitment, flexibility and a sense of adventure.

Artists such as Charlie Hooker at Amherst School, and Terry O'Farrell at Berger School, enabled teachers to develop projects which crossed traditional boundaries: Charlie's work made connections between music, movement, art and maths and culminated in public performances, while Terry's linked sculpture and dance. Caroline Wilkinson at Grenfell School and Keith Frake at Ben Jonson School introduced the medium of tape/slide to pupils, guiding them towards highly professional productions which involved creative writing, drawing, photography and sound.

Demand for artists to work in schools has greatly increased over the years, leading to the development of other projects such as visits to studios, and one-day talks and workshops. Teachers are also encouraged to nurture their own links with locally based artists and to maintain a creative interest in contemporary art through regular visits to the Whitechapel's exhibitions with their classes.

Jenni Lomax

Allan de Souza at Daneford School, Bethnal Green

Allan de Souza's work in mixed media, which deals with issues related to being an Asian male living in Britain, was considered to be particularly suitable for Daneford Secondary Boys School by the head art teacher. During his residency, now in its second term, Allan has tried to get the boys to think and look beyond naturalistic representation and to build up a larger portrait of themselves. The project has included looking in a mirror, sketching, painting, and collecting objects and images which enable the 'self portraits' to take in elements of memory and experience.

ALLAN DE SOUZA

Towards the Subject of Desire no. 7 1987

Approx. 1.5 x 1.75m

Not for sale

Neil Jeffries at Stebon School, Bow Common

Teachers at Stebon Primary School on the Burdett Estate judged that the lively narrative of Neil Jeffries' 3D tin paintings would awaken a new interest in art throughout the school. Difficulties arising from staff changes, timetable clashes and lack of suitable space hindered progress in the first (Summer) term, but these were successfully overcome in a second term, and the children fully engaged both by visits to museums and galleries, and in making art. The results are on show: colourful sculptures of wild beasts, humans and machines made from wood, plaster and soft fabrics.

NEIL JEFFRIES (b. 1959)

Reverie Metropole 1986

Oil on sheet metal, 110 x 100 x 75

Price: £2,800

Jo Stockham at John Scurr School, Stepney

Jo Stockham is in the mid-term of her residency at John Scurr Junior School. So far the pupils working with her have been learning about the ideas behind her work, and experimenting with print-making techniques, particularly monotypes and stencils. The staff are hoping that funds can be raised to allow Jo to stay at the school for a further term.

JO STOCKHAM (b. 1961)

A Rosy Future – What Nature? 1986

Metal, glass, concrete, wood and lead,

170 x 144 x 56

Price: £850

Acknowledgments

The Gallery would like to thank the staff of **Bethnal Green Library** for allowing the selection of the exhibition to take place on their premises.

Sales

Any visitors to the exhibition who are interested in buying works of art on view should contact the Information Desk.

Education Programme

Full details of the Gallery's education programme, and talks relating to the Open exhibition are given in the March/April newsheet.

Whitechapel Art Gallery

Whitechapel High Street, London E1 7QX. 01-377 0107

Underground: Aldgate East.

Opening Hours: Tuesday to Sunday 11am–5pm, Wednesday–8pm.

Closed Friday 17 April. Admission free.

Designed by Peter Saville Associates. Printed by Padnall Printers Ltd
Published by the Trustees of the Whitechapel Art Gallery © 1987